



OFF-THE-ROAD TIRES

2022 Product Catalogue



 **TRIANGLE**
Tires for Life

RADIAL TIRES

Find the right tire to fit your equipment



RIGID DUMP TRUCK

P (011-26)



ARTICULATED DUMP TRUCK

P (17-34)



LOADER AND BULLDOZER

P (11-44)





GRADER

P (20-24)



UNDERGROUND MINING

P (30-44)



MOBILE CRANE

P (45-70)



SCRAPER

P (11-24)



INDUSTRIAL AND PORT

P (17-28)



BIAS TIRES

Find the right tire to fit your equipment



LOADER AND BULLDOZER

P (81-88)



TL502



TL658



TL568



TL612



TL510



TL520



GRADER

P (89-94)



TL508



TL612



TL568



INDUSTRIAL AND PORT

P (95-104)



TL612



TL558



TL510



TL530



TL610



IND-55



DESERT

P (105-110)



TR128



TR138



TR139



TB812



TL526



COMPACTOR

P (100-150)



C-1



TB822



R3



TL526



RIGID DUMP TRUCK

P (110-120)



TL558



TL612



TL568



TL510



UNDERGROUND MINING

P (120-126)



L-45



L-55

NOM

RADIAL TIRES

Off-the-Road Tires





E-2

TB586

TB536



E-3

TB526

TL569

TL569A

TL569A PRO



RIGID DUMP TRUCK RADIAL TIRES



E-4

TB516S

TB566S

TB526S

TB577A

TB577A SUPER



E-4

TL588

TB599

TB599A

TB599A PRO



TB586 E2

Rigid Dump Truck - Radial

NOM

Rigid Dump Truck Usage



- Aggressive and self cleaning tread design for outstanding traction in tough off-road conditions
- Unique compound and tread design offer high-speed capability while minimizing fuel consumption
- Radial construction improves treadwear and ride comfort

TB586 E2

Size	Star Rating	Tube		LI/SS
		TT	TL	
14.00R25	★★★RF	TT/TL		175B

RF — Reinforced



TB536 E2 NOM

Rigid Dump Truck - Radial

Traction Radial Tire for Applications on Uneven Terrain



- Non-directional aggressive tread design delivers outstanding traction and stability
- Unique compound for enhanced cut resistance and long tread life
- Tough radial construction for cooler running and comfortable ride

Size	Star Rating	Tube		LI/SS
		TT	TL	
14.00R24	★★★		TL	169B
14.00R25	★★★		TL	169B

TB526 E3 NOM

Rigid Dump Truck - Radial

Traction Radial Tire for Earthmover Applications



- Big block pattern to prevent cut and chipping damage
- Reinforced sidewall for protection and longer tire life

Size	Star Rating	Tube		LI/SS
		TT	TL	
14.00R25	★★★RF	TT/TL		175B

RF — Reinforced



TL569 E3

Rigid Dump Truck – Radial



Traction Radial Tire for Earthmover Applications

- Excellent traction pattern design for grip
- Good anti cut and chipping for longer tire life
- Tough casing construction for enhanced impact and cut resistance support

NOM

TL569A E3

Rigid Dump Truck – Radial



- Excellent anti-cut and wear performance offer long tire life
- Wide open shoulder grooves offer good heat emission
- Excellent self-clean pattern design for dump truck operation

NOM



TL569A PRO E3

Rigid Dump Truck – Radial



- Optimised pitch for better heat performance

NOM

TL569A E3

NOM

Size	Star Rating	Tube		LI/SS
		TT	TL	
14.00R25	★★★★RF	TT/TL		175B
16.00R25	★★★★RF	TT/TL		161B

RF Reinforced

TL569 E3

NOM

Size	Star Rating	Tube		LI/SS
		TT	TL	
13.00R25(10.00 Rim)	★★★	TT		163B
13.00R25(8.50 Rim)	★★★	TT		163B
14.00R24	★★★★RF	TT		175B
14.00R25	★★★★RF	TT/TL		175B

RF Reinforced

TL569A PRO E3

NOM

Size	Star Rating	Tube		LI/SS
		TT	TL	
14.00R25	★★★★RF	TT		175B

RF Reinforced

Features & Benefits



Good anti cut and chipping for longer tire life



Tough casing construction for enhanced impact and cut resistance support





NOM **TB516S** E4
Rigid Dump Truck - Radial

Radial Haulage Tire with
Excellent Durability



- Wide aggressive tread design for excellent handling, outstanding traction and lateral adhesion
- Robust shoulder and enhanced sidewall offer great resistance to damage in harsh environments
- Tough casing construction for enhanced impact and cut resistance support

Size	Star Rating	Tube		LI/SS
		TT	TL	
14.00R24	★★★		TL	169B
14.00R24	★★★RF	TT		175B
14.00R25	★★★		TL	169B
14.00R25	★★★RF	TL		175B
16.00R25	★★★RF	TT		181B
18.00R25	★★		TL	185B
18.00R25	★★★		TL	206A2

RF ————— Retrievect

NOM **TB566S** E4
Rigid Dump Truck - Radial

Excellent Value Radial for
Uneven Hard Surfaces



- Unbroken tread in the center with deep grooves for reduced vibration and enhanced stability
- Reinforced shoulder design offers large contact on the ground for outstanding stability
- Strong sidewall for extra protection against abrasions and damages

Size	Star Rating	Tube		LI/SS
		TT	TL	
18.00R33	★★		TL	191B



NOM TB526S E4



Rigid Dump Truck – Radial



Radial Haulage Tire Providing Outstanding Traction and Long, Even Tread Wear

- Deep lug pattern provides even pressure distribution, which increases mobility and optimizes traction
- Buttressed shoulder lugs offer enhanced resistance to sidewall cutting and also improved self-cleaning
- Rugged tread design and unique compound for long even wear
- Radial construction for enhanced treadwear and comfortable ride

Size	Star Rating	Tube		LI/SS
		TT	TL	
18.00R33	★★		TL	191B
21.00R33	★★		TL	200B
21.00R35	★★		TL	201B
24.00R35	★★		TL	209B
27.00R49	★★		TL	223B



Features & Benefits



Butressed shoulder lugs offer enhanced resistance to sidewall cutting and also improved self-cleaning



Rugged tread design and unique compound for long even wear



NOM

TB577A E4
Rigid Dump Truck - Radial



- Excellent traction for rigid dump truck operation
- Special tread pattern design for excellent heat dispersion
- Optimized casing design for good load capability



TB577A SUPER E4
Rigid Dump Truck - Radial

- Further improved tread design for longer tire life

NOM



TB577A E4

NOM

Size	Star Rating	Tube		LI/SS
		TT	TL	
24.00R35	★★★		TL	212B

TB577A SUPER E4

NOM

Size	Star Rating	Tube		LI/SS
		TT	TL	
24.00R35	★★★		TL	212B



Features & Benefits



Special tread pattern design for excellent heat dispersion



Optimized casing design for good load capability

TL588 E4 NOM

Rigid Dump Truck – Radial



E4 Tire for Rigid Dump Trucks

- Massive tread pattern and deep tread depth to optimized life
- Choice of application-specific compound for exceptional performance
- Radial construction improves tread wear and reduces running temperature

Size	Star Rating	Tube		LI/SS
		TT	TL	
33.00R51	★ ★		TL	235B



Features & Benefits



Massive tread pattern and deep tread depth to optimized life



Choice of application-specific compound for exceptional performance



Radial construction improves tread wear and reduces running temperature



TB599 E4 NOM

Rigid Dump Truck – Radial



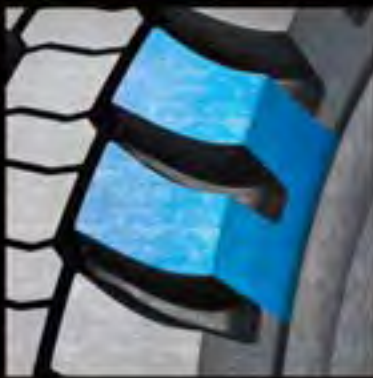
Long Lasting Tire for Severe Mine and Quarry Conditions

- Deep tread combined with sturdy shoulder and sidewall provide outstanding protection
- Choice of application-specific compound for exceptional performance
- Unique tread design and deep tread deliver an improvement in tire life

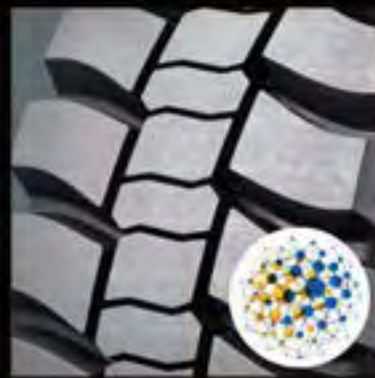
Size	Star Rating	Tube		LI/SS
		TT	TL	
37.00R57	★★		TL	245B
40.00R57	★★		TL	250B
46.90R57	★★		TL	252B



Features & Benefits



Deep tread combined with sturdy shoulder and sidewall provide outstanding protection



Choice of application-specific compound for exceptional performance



Unique tread design and deep tread deliver an improvement in tire life

NOM **TB599A E4**

Rigid Dump Truck – Radial



Long Lasting Tire for Severe Mine and Quarry Conditions

- Deep tread combined with sturdy shoulder and sidewall provide excellent traction and stability
- Deep tread for cut and chip resistance
- Choice of application-specific compound for exceptional low heat generation.
- Unique tread design and deep tread deliver an improvement in tire life

TB599A PRO E4

Rigid Dump Truck – Radial



Long Lasting Tire for Severe Mine and Quarry Conditions

- Optimised case line and block toughness for better footprint
- Optimised grooves to prevent stone drilling

NOM

TB599A E4

NOM

Size	Star Rating	Tube		LI/SS
		TT	TL	
27.00R49	★★		TL	223B
33.00R51	★★		TL	235B
46/90R57	★★		TL	252B
50/80R57	★★		TL	255B
53/80R63	★★		TL	261B

TB599A PRO E4

NOM

Size	Star Rating	Tube		LI/SS
		TT	TL	
40.00R57	★★		TL	250B



Features & Benefits



Deep tread combined with sturdy shoulder and sidewall provide excellent traction and stability



Unique tread design and deep tread deliver an improvement in tire life



TRINITY
Tires for Life



E-2

TM518



E-3

TB516

TL528

TB598

NOM

ARTICULATED DUMP TRUCK RADIAL TIRES



E-4

TB598S







NOM **TM518** **E2**
Articulated Dump Truck - Radial

Excellent Value Radial for Uneven Hard Surfaces



- Continuous center tread for better contact pressure distribution to improve tread wear
- Massive shoulder blocks for improved toughness and enhanced sidewall protection
- Unique compound for improved resistance to cut and tear

Size	Star Rating	Tube		LI/SS
		TT	TL	
23.5R25	★★		TL	185B

NOM **TB516** **E3**
Articulated Dump Truck - Radial

Versatile Radial Tire for Loaders, Dozers and other Equipment



- Wide aggressive tread design for excellent handling, outstanding traction and lateral adhesion
- Robust shoulder and enhanced sidewall offer great resistance to damage and aggression
- Tough casing construction for enhanced impact and cut resistance support

Size	Star Rating	Tube		LI/SS
		TT	TL	
17.5R25	★★		TL	167B
20.5R25	★★		TL	177B
23.5R25	★★		TL	185B
26.5R25	★★		TL	193B
29.5R25	★★		TL	200B
29.5R29	★★		TL	202B





NOM TL528 E3
Articulated Dump Truck - Radial

Excellent Traction Radial Tire with Outstanding Performance on Soft Muddy Terrain



- Open lug design for excellent traction and maneuverability
- Unique tread pattern for enhanced self-cleaning performance
- Tough construction for enhanced impact resistance

Size	Star Rating	Tube		LI/SS
		TT	TL	
23.5R25	★★		TL	185B

NOM TB598 E3
Articulated Dump Truck - Radial

Excellent Traction Radial with Exceptional Reliability in Haulage Applications



- Aggressive self-cleaning tread pattern for excellent traction, flotation and long tread life
- Rugged shoulder design for enhanced sidewall protection
- Unique compound for long tread life and efficient fuel economy
- Tough casing construction for enhanced impact and penetration resistance

Size	Star Rating	Tube		LI/SS
		TT	TL	
23.5R25 E3/L3	★★		TL	185B
26.5R25 E3/L3	★★		TL	193B
29.5R25 E3/L3	★★		TL	200B
600/65R25 E3/L3	★★		TL	178B
650/65R25 E3/L3	★★		TL	180B
750/65R25	★★		TL	190B
775/65R29	★★		TL	195B
875/65R29	★★		TL	203B

TRIANGLE
Tires for you



NOM TB598S E4

Articulated Dump Truck – Radial



Radial Tire Providing Excellent Traction and Exceptional Reliability

- Aggressive self-cleaning tread pattern for excellent traction, flotation and long tread life
- Rugged shoulder design for enhanced sidewall protection
- Unique compound for long tread life and efficient fuel economy
- Tough casing construction for enhanced impact and penetration resistance

Size	Star Rating	Tube		LI/SS
		TT	TL	
23.5R25	★★		TL	185B
26.5R25	★★		TL	193B
29.5R25	★★		TL	200B
33.25R29	★★		TL	209B
750/65R25	★★		TL	190B
875/65R29	★★		TL	203B



Features & Benefits



Aggressive self-cleaning tread pattern for excellent traction, flotation and long tread life



Rugged shoulder design for enhanced sidewall protection



L-2

TB515

TM518

TB596

TB595



L-3

TB516

TL528

TB598

NOM

LOADER AND BULLDOZER RADIAL TIRES



L-4

TB598S



L-5

TL535S+



TL538S+



TL559S+

NOM

 **TRIANGLE**
Take for life





NOM **TB515** L2
Loader and Bulldozer - Radial

Radial Tire with Outstanding Traction for Applications on Uneven Terrain



- Non-directional aggressive tread design delivers exceptional traction and stability
- Deep non-skid for long tread life
- Shoulder and sidewall intersection offers enhanced resistance to damage

Size	Star Rating	Tube		LI/SS
		TT	TL	
17.5R25	★		TL	176A2
17.5R25	★★		TL	182A2
20.5R25	★		TL	186A2
20.5R25	★★		TL	193A2

NOM **TM518** L2
Loader and Bulldozer - Radial

Excellent Value Radial for Uneven Hard Surfaces



- Continuous center tread for better contact pressure distribution to improve tread wear
- Massive shoulder blocks for improved toughness and enhanced sidewall protection
- Unique compound for improved resistance to cut and tear

Size	Star Rating	Tube		LI/SS
		TT	TL	
23.5R25	★		TL	195A2
23.5R25	★★		TL	201A2



TB596 L2

Loader and Bulldozer – Radial

NOM



All-season Radial Tire with Exceptional Traction on Snow and Ice Surfaces

- Aggressive lug design with intensive sipes offers maximum handling in snow and ice conditions
- Wide, non-directional tread pattern for all-season use
- Unique compound to improve treadwear
Tough construction for enhanced tread life

TB595 L2

Loader and Bulldozer – Radial

NOM



- Big block design for increased tire life
- Lateral shoulder blocks design for good snow traction
- Special compound and sipes for good handling in winter

TB596 L2

NOM

Size	Star Rating	Tube		LI/SS
		TT	TL	
14.00R24	★		TL	175A2
17.5R25	★		TL	176A2
17.5R25	★★		TL	182A2
20.5R25	★		TL	186A2
20.5R25	★★		TL	193A2
23.5R25	★		TL	195A2
23.5R25	★★		TL	201A2

TB595 L2

NOM

Size	Star Rating	Tube		LI/SS
		TT	TL	
14.00R24	★		TL	175A2
17.5R25	★		TL	176A2
17.5R25	★★		TL	182A2
20.5R25	★		TL	186A2
20.5R25	★★		TL	193A2

Features & Benefits



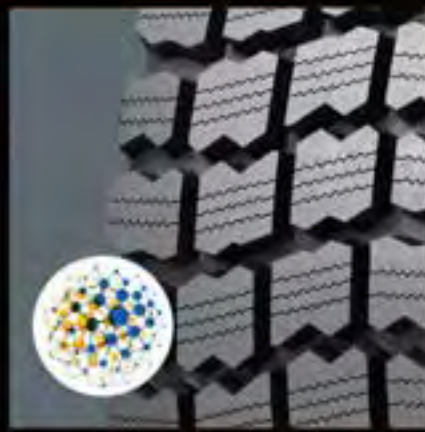
Wide, non-directional tread pattern for all-season use



Unique compound to improve treadwear



Big block design for increased tire life



Special compound and sipes for good handling in winter

 **TRIANGLE**
Tires for Life





NOM **TB516** L3
Loader and Bulldozer - Radial

Versatile Radial Tire for Loaders, Dozers and other Equipment



- Wide aggressive tread design for excellent handling, outstanding traction and lateral adhesion
- Robust shoulder and enhanced sidewall offer great resistance to damage and aggression
- Tough casing construction for enhanced impact and cut resistance support

Size	Star Rating	Tube		LI/SS
		TT	TL	
17.5R25	★		TL	176A2
17.5R25	★★		TL	182A2
20.5R25	★		TL	186A2
20.5R25	★★		TL	193A2
23.5R25	★		TL	195A2
23.5R25	★★		TL	201A2
26.5R25	★		TL	202A2
26.5R25	★★		TL	209A2
29.5R25	★		TL	208A2
29.5R25	★★		TL	216A2
29.5R29	★		TL	211A2
29.5R29	★★		TL	218A2

NOM **TL528** L3
Loader and Bulldozer - Radial

Excellent Traction Radial Tire with Outstanding Performance on Soft Muddy Terrain



- Open lug design for excellent traction and maneuverability
- Unique tread pattern for enhanced self-cleaning performance
- Tough construction for enhanced impact resistance

Size	Star Rating	Tube		LI/SS
		TT	TL	
23.5R25	★		TL	195A2
23.5R25	★★		TL	201A2

TB598 L3

Loader and Bulldozer – Radial

NOM



Excellent Traction Radial with Exceptional Reliability in Haulage Applications

- Aggressive self-cleaning tread pattern for excellent traction, flotation and long tread life
- Rugged shoulder design for enhanced sidewall protection
- Unique compound for long tread life and efficient fuel economy
- Tough casing construction for enhanced impact and penetration resistance

TB598S L4

Loader and Bulldozer – Radial

NOM



Radial Tire Providing Excellent Traction and Exceptional Reliability

- Aggressive self-cleaning tread pattern for excellent traction, flotation and long tread life
- Rugged shoulder design for enhanced sidewall protection
- Unique compound for long tread life and efficient fuel economy
- Tough casing construction for enhanced impact and penetration resistance

TB598 L3

NOM

Size	Star Rating	Tube		LI/SS
		TT	TL	
23.5R25	★★		TL	201A2
26.5R25	★★		TL	209A2
29.5R25	★★		TL	216A2
600/65R25	★★		TL	195A2
650/65R25	★★		TL	200A2
750/65R25	★★		TL	209A2
775/65R29	★★		TL	213A2
875/65R29	★★		TL	221A2

TB598S L4

NOM

Size	Star Rating	Tube		LI/SS
		TT	TL	
23.5R25	★★		TL	201A2
26.5R25	★★		TL	209A2
26.5R25	★★★		TL	214A2
29.5R25	★★		TL	216A2
875/65R29	★★		TL	221A2



Features & Benefits



Aggressive self-cleaning tread pattern for excellent traction, flotation and long tread life



Rugged shoulder design for enhanced sidewall protection

TL538S+ L5

Loader and Bulldozer – Radial

NOM



Excellent Radial Tire for Difficult Operating Conditions

- Aggressive open tread pattern for excellent grip and powerful traction
- Uniform groove depth for outstanding traction throughout the life of the tire
- Rugged shoulder design for enhanced stability and improved sidewall protection

TL535S+ L5

Loader and Bulldozer – Radial

NOM



Robust Radial Tire for Severe Conditions

- Excellent traction pattern design for grip
- Extra deep tread to prevent cut and chipping damage
- Good handling and stability

TL559S+ L5

Loader and Bulldozer – Radial

NOM



Robust Radial Tire for Severe Conditions

- Extra deep tread for long tread life and enhanced traction and flotation
- Massive buttressed shoulders for enhanced resistance to damage
- Unique compound and heavy duty casing for extra protection

TL538S+ L5

NOM

Size	Star Rating	Tube		LI/SS
		TT	TL	
20.5R25	★		TL	186A2
20.5R25	★★		TL	193A2
23.5R25	★		TL	195A2
23.5R25	★★		TL	201A2
26.5R25	★		TL	202A2
26.5R25	★★		TL	209A2
29.5R25	★		TL	208A2
29.5R25	★★		TL	216A2

TL559S+ L5

NOM

Size	Star Rating	Tube		LI/SS
		TT	TL	
20.5R25	★★		TL	193A2
20.5R25	★★★		TL	198A2
23.5R25	★★		TL	201A2
23.5R25	★★★		TL	206A2
26.5R25	★★		TL	209A2
26.5R25	★★★		TL	214A2
29.5R25	★★		TL	216A2
29.5R25	★★★		TL	221A2

TL535S+ L5

NOM

Size	Star Rating	Tube		LI/SS
		TT	TL	
35/65R33	★		TL	217A2
35/65R33	★★		TL	224A2
35/65R33	★★★		TL	229A2

Features & Benefits



Aggressive open tread pattern for excellent grip and powerful traction



Excellent traction pattern design for grip



Extra deep tread for long tread life and enhanced traction and flotation



G-2

TB596

TB595

TB515

TB536



GRADER RADIAL TIRES



 **TRIANGLE**
Tires for Life





NOM **TB596** G2
Grader - Radial

All-season Radial Tire with Exceptional Traction on Snow and Ice Surfaces



- Aggressive lug design with intensive sipes offers maximum handling in snow and ice conditions
- Wide, non-directional tread pattern for all-season use
- Unique compound to improve treadwear
Tough construction for enhanced tread life

Size	Star Rating	Tube		LI/SS
		TT	TL	
14.00R24 TG	★		TL	153A8
17.5R25	★		TL	153A8
20.5R25	★		TL	161A8
23.5R25	★		TL	170A8

NOM **TB595** G2
Grader - Radial



- Big block design for increased tire life
Lateral shoulder blocks design for good snow traction
- Special compound and sipes for good handling in winter

Size	Star Rating	Tube		LI/SS
		TT	TL	
14.00R24 TG	★		TL	153A8
17.5R25	★		TL	153A8
20.5R25	★		TL	161A8





NOM **TB515** G2
Grader - Radial

Radial Tire with Outstanding Traction
for Applications on Uneven Terrain



- Non-directional aggressive tread design delivers exceptional traction and stability
- Deep non-skid for long tread life
- Shoulder and sidewall intersection offer enhanced resistance to damage

Size	Star Rating	Tube		LI/SS
		TT	TL	
14.00R24	★		TL	153A8
17.5R25	★		TL	153A8
20.5R25	★		TL	161A8

NOM **TB536** G2
Grader - Radial

Traction Radial Tire for Applications on
Uneven Terrain



- Non-directional aggressive tread design delivers outstanding traction and stability
- Unique compound for enhanced cut resistance and long tread life
- Tough radial construction for cooler running and comfortable ride

Size	Star Rating	Tube		LI/SS
		TT	TL	
14.00R24	★		TL	153A8



E-4 **TL558S**



E-4/L-4 **TL578S**

NOM

UNDERGROUND MINING RADIAL TIRES



L-5

TL559S+



L-4S

TSMS



L-5S

TSMS+

NOM



TL558S E4 NOM

Underground Mining - Radial

Traction Radial Tire for Container Handling Equipment



- Deeper tread for long wear and enhanced traction
- Unique compound for long tread life and advanced tear resistance
- Radial construction improves treadwear and softer ride

Size	Star Rating	Tube		LI/SS
		TT	TL	
16.00R25	★★★		TL	198A2
18.00R25	★★★		TL	206A2





TL578S E4/L4 NOM

Underground Mining – Radial



- Special open shoulder design for excellent heat emission
- Wide grooves provide excellent traction
- Big lug blocks offer long tire life
- Strong shoulder design for reduced side scratch risks

Size	Star Rating	Tube		LI/SS
		TT	TL	
29.5R29	★★★★		TL	219A8
29.5R29	★★★		TL	223A2
35/65R33	★★★★		TL	225A8
35/65R33	★★★		TL	229A2



Features & Benefits



Special open shoulder design for excellent heat emission




Wide grooves provide excellent traction



Big lug blocks offer long tire life



TL559S+ L5 NOM

Underground Mining – Radial 

Robust Radial Tire for Severe Conditions

- Extra deep tread for long tread life and enhanced traction and flotation
- Massive butted shoulders for enhanced resistance to damage
- Unique compound and heavy duty casing for extra protection
- Tough casing construction for enhanced impact and cut resistance support

Size	Star Rating	Tube		LI/SS
		TT	TL	
20.5R25	★★★		TL	198A2
23.5R25	★★		TL	201A2
23.5R25	★★★		TL	206A2
26.5R25	★★		TL	209A2
26.5R25	★★★		TL	214A2
29.5R25	★★		TL	216A2
29.5R25	★★★		TL	221A2



Features & Benefits



Extra deep tread for long tread life and enhanced traction and flotation



Massive butressed shoulders for enhanced resistance to damage



Tough casing construction for enhanced impact and cut resistance support



TSMS L4S

Underground Mining – Radial

NOM

Smooth Extra Tread Radial Loader Tire for Severe Operating Conditions

- Smooth tread design eliminates tearing, delivers smooth ride and longer wear
- Unique compound for long tread life and advanced cut resistance
- Radial construction improves treadwear and cool running
- Tough casing construction for enhanced impact and cut resistance support

TSMS+ L5S

Underground Mining – Radial

NOM

Smooth Super Extra Tread Radial Loader Tire for Severe Operating Conditions

- Super extra deep tread depth offers excellent wear
- Smooth tread design eliminates tearing, delivers smooth ride and longer wear
- Unique compound for long tread life and advanced cut resistance
- Radial construction improves treadwear and cool running
- Tough casing construction for enhanced impact and cut resistance support

TSMS+ L5S

NOM

Size	Star Rating	Tube		LI/SS
		TT	TL	
17.5R25	★★	TT/TL		182A2
17.5R25	★★★	TT/TL		188A2
18.00R25	★★	TT/TL		204A2
18.00R25	★★★	TT/TL		206A2
26.5R25	★		TL	202A2
26.5R25	★★		TL	209A2
26.5R25	★★★		TL	214A2

TSMS L4S

NOM

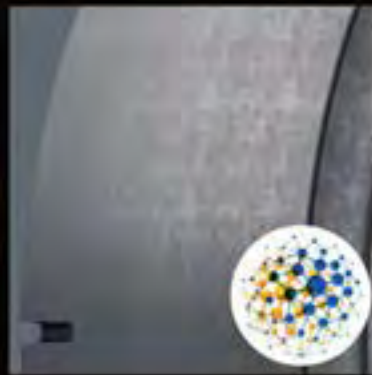
Size	Star Rating	Tube		LI/SS
		TT	TL	
16.00R25	★★		TL	195A2
16.00R25	★★★		TL	198A2



Features & Benefits



Super extra deep tread depth offers excellent wear



Unique compound for long tread life and advanced cut resistance



Tough casing construction for enhanced impact and cut resistance support



E-2

TB576

TB586

TB589

NOM

MOBILE CRANE RADIAL TIRES



NOM TB576 E2

Mobile Crane – Radial



Excellent Design for High Speed Mobile Crane Application

- Straight rib design gives good comfort for high speed application.
- Longitudinal shoulder design provides good traction and ensure even wear
- Innovatively designed crown with a stepped stone ejection groove preventing stone pinching and improve the traction.
- Reinforced ribs connecting with circumferential blocks ensure the overall performance on highway

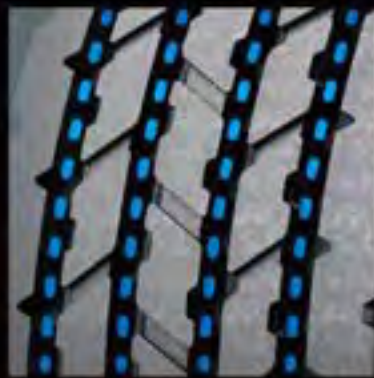
Size	Star Rating	Tube		LI/SS
		TT	TL	
385/95R24 (14.00R24)	★★★	TT		170F
385/95R25(14.00R25)	★★★	TL		170F
445/95R25(16.00R25)		TL		174F
525/80R25(20.5R25)		TL		176F



Features & Benefits



Longitudinal shoulder design provides good traction and ensure even wear



Innovatively designed crown with a stepped stone ejection groove preventing stone pinching and improved traction



Reinforced ribs connecting with circumferential blocks ensure the overall performance on highway





NOM TB586 E2

Mobile Crane - Radial

High Speed Mobile Crane Tire
for On and Off Highway Applications



- Aggressive and self cleaning tread design for outstanding traction in tough off-road conditions
- Unique compound and tread design offers high-speed capability while minimizing fuel consumption
- Radial construction improves treadwear and ride comfort

Size	Star Rating	Tube		LI/SS
		TT	TL	
385/95R24 (14.00R24)	★★★	TT		170F
385/95R25 (14.00R25)	★★★	TL		170F
445/95R25 (16.00R25)	★★★	TL		174F

NOM TB589 E2

Mobile Crane - Radial

High Speed Mobile Crane Tire
for On and Off Highway Applications



- Aggressive tread design for outstanding traction
- Unique compound and tread design offers high-speed capability while minimizing fuel consumption
- Radial construction improves treadwear and ride comfort

Size	Star Rating	Tube		LI/SS
		TT	TL	
305/95R25 (18.00R25)	★★★	TL		186E



E-3	TB516	TL568+
------------	--------------	---------------



SCRAPER RADIAL TIRES







NOM **TB516** **E3**
 Scraper - Radial

Versatile Radial Tire for Loaders, Dozers and other Equipment



- Wide aggressive tread design for excellent handling, outstanding traction and lateral adhesion
- Robust shoulder and enhanced sidewall offer great resistance to damage and aggression
- Tough casing construction for enhanced impact and cut resistance support

Size	Star Rating	Tube		LI/SS
		TT	TL	
29.5R29	★★		TL	202B

NOM **TL568+** **E3**
 Scraper - Radial

Radial Tire for Mid-size Scrapers with Enhance Traction



- Open tread design with large blocks for outstanding traction
- Enhanced shoulder for improved protection in tough environments
- Special formulated tread compound for long tread life
- Tough construction for enhanced impact and cut resistance support

Size	Star Rating	Tube		LI/SS
		TT	TL	
33.25R29	★★		TL	209B



E-2 **TB536**



E-3 **TB516**

INDUSTRIAL AND PORT RADIAL TIRES



IND-4

TL558S



TB536 E2 NOM

Industrial and Port - Radial

Traction Radial Tire for Applications on Uneven Terrain



- Non-directional aggressive tread design delivers outstanding traction and stability
- Unique compound for enhanced cut resistance and long tread life
- Tough radial construction for cooler running and comfortable ride

Size	Star Rating	Tube		LI/SS
		TT	TL	
14.00R25	★★★		TL	177A5



NOM **TB516** **E3**
Industrial and Port - Radial

Versatile Radial Tire for Industrial Equipment



- Wide aggressive tread design for excellent handling, outstanding traction and lateral adhesion
- Robust shoulder and enhanced sidewall offer great resistance to damage and aggression
- Tough casing construction for enhanced impact and cut resistance support

Size	Star Rating	Tube		LI/SS
		TT	TL	
20.5R25	★★RF		TL	198A2
23.5R25	★★RF		TL	204A2
26.5R25	★★RF		TL	210A2
26.5R25	★★★		TL	214A2
29.5R25	★★RF		TL	219A2
29.5R29	★★RF		TL	221A2

RF ————— (Restrictor)

NOM **TL558S** **IND-4**
Industrial and Port - Radial

Traction Radial Tire for Container Handling Equipment



- Deeper tread for long wear and enhanced traction
- Unique compound for long tread life and advanced tear resistance
- Radial construction improves treadwear and softer ride

Size	Star Rating	Tube		LI/SS
		TT	TL	
16.00R25	★★★		TL	208A2/200A5
18.00R25	★★★		TL	216A2/207A5

BIAS TIRES

Off-the-Road Tires





TL502

TL658

TL566



TL612

TL516

TL520



LOADER AND BULLDOZER BIAS TIRES





TL502

Loader and Bulldozer - Bias

NOM

Bias Traction Tire for Loaders and Dozers



- Non-directional tread design for excellent traction and stability
- Unique compound for long original tread life and advanced cut resistance
- Tough construction for enhanced impact and cut resistance support

Size	Ply Rating	Tube	
		TT	TL
15.5-25	12PR		TL



NOM TL658

Loader and Bulldozer - Bias

Bias tire with good anti-cut performance



- Big lug pattern design for good anti-cut and traction under rough surface operation
- Strong shoulder design for reduced side scratch risks
- Good handling and stability

Size	Ply Rating	Tube	
		TT	TL
23.5-25	18PR		TT

NOM TL566

Loader and Bulldozer - Bias

Bias tire with good heat performance



- Adjusted pitch for good heat performance
- Tough casing for good load capability

Size	Ply Rating	Tube	
		TT	TL
23.5-25	16,18PR		TT

TRIANGLE
TIRES FOR LIFE

TL612

NOM

Loader and Bulldozer – Bias



Excellent Value, Multi-use Bias Tire for Rough Terrain

- Wide tread width improves mobility and offers a more comfortable ride
- Unique compound to improve overall tread-wear and cost per hour
- Tough construction for enhanced impact resistance

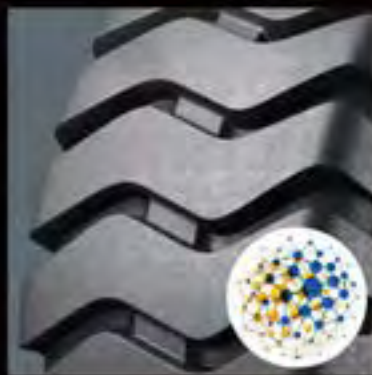
Size	Ply Rating	Tube	
		TT	TL
16/70-20	10, 12, 14PR		TT
14.00-24	16, 24PR		TT
17.5-25	12, 16PR		TT
17.5-25	12, 16PR		TL
20.5-25	16, 20PR		TL
20.5-25	16, 20PR		TT
23.5-25	16, 20PR		TL
23.5-25	16, 18, 20, 24PR		TT
26.5-25 L-4	20, 28PR		TL
26.5-25 L-3	20, 24, 28PR		TT
26.5-25 L-3	20, 28, 32PR		TL
29.5-25	22, 28, 34PR		TL
29.5-29	28PR		TL



Features & Benefits



Wide tread width improves mobility and offers a more comfortable ride



Unique compound to improve overall treadwear and cost per hour



Tough construction for enhanced impact resistance





NOM TL516

Loader and Bulldozer - Bias

Multi-use Bias Tire for Rough Terrain Applications



- Optimized tread design offers outstanding traction
- Unique compound for overall treadwear performance improvement
- Tough bias construction to help improve impact and cut resistance

Size	Ply Rating	Tube	
		TT	TL
16/70-20	12PR	TT	
17.5-25	12, 16PR	TT	
23.5-25	16, 18, 20PR	TT	

NOM TL520

Loader and Bulldozer - Bias

Bias Tire with Super Deep Tread for Enhanced Wear and Traction



- Super extra deep tread depth offers maximum wear
- Deep tread for long wear and improved traction
- Unique compound for long original tread life and advanced tear resistance
- Tough construction for enhanced impact and cut resistance support

Size	Ply Rating	Tube	
		TT	TL
20.5-25	20PR	TT	
23.5-25	20PR	TT	
45/65-45	58PR	TL	



TL508

TL612

TL568

**GRADER
BIAS TIRES**



 **TRIANGLE**
Tires for Life





NOM TL508

Grader - Bias

Bias Traction Tire for Use in Varied Applications



- Optimized tread design for traction in soft soil
- Open shoulder grooves for improved traction and less slippage
- Unique compound for long original tread life and advanced cut resistance
- Tough construction for enhanced impact and cut resistance performance

Size	Ply Rating	Tube	
		TT	TL
14.00-24TG	12PR		TL
15.5-25	12PR		TL
17.5-25	12, 16PR	TT/TL	
20.5-25	12, 16PR		TL
23.5-25	16PR		TT/TL

NOM TL612

Grader - Bias

Excellent Value, Multi-use Bias Tire for Rough Terrain



- Wide tread width improves mobility and offers a more comfortable ride
- Unique compound to improve overall treadwear and cost per hour
- Tough construction for enhanced impact resistance

Size	Ply Rating	Tube	
		TT	TL
17.5-25	12, 16PR	TT	
17.5-25	12, 16PR		TL



TL568

NOM

Grader – Bias



Bias Tire for Graders with Enhanced Traction

- Open tread design with large blocks for outstanding traction
- Enhanced shoulder for improved protection in tough environments
- Special formulated tread compound for long original tread life
- Tough construction for enhanced impact and cut resistance support

Size	Ply Rating	Tube	
		TT	TL
17.5-25	16PR		TL



Features & Benefits



Open tread design with large blocks for outstanding traction



Enhanced shoulder for improved protection in tough environments
Special fomulated tread



Special fomulated tread compound for long original tread life



TL612

TL558

TL510



TL530

TL619

IND-5S

NOM

INDUSTRIAL AND PORT BIAS TIRES



 **TRIANGLE**
Tires for Life

NOM

TL612

Industrial and Port – Bias



Excellent Value, Multi-use Bias Tire for Rough Terrain

- Wide tread width improves mobility and offers a more comfortable ride
- Unique compound to improve overall tread-wear and cost per hour
- Tough construction for enhanced impact resistance

Size	Ply Rating	Tube	
		TT	TL
20.5-25	28PR		TL
26.5-25	32PR		TL
29.5-25	34PR		TL



Features & Benefits



Wide tread width improves mobility and offers a more comfortable ride



Unique compound to improve overall treadwear and cost per hour



TL558

NOM

Industrial and Port - Bias

Multi-use Bias Tire Providing Greater Mobility



- Open pattern tread design for enhanced traction in off road conditions
- Unique compound to improve overall treadwear and cost per hour
- Tough bias construction for improved impact and cut resistance

Size	Ply Rating	Tube	
		TT	TL
14.00-24	28PR	TT	



TL510

Industrial and Port - Bias

Traction Bias Tire with Longer Wear



- Deep tread for long wear and improved traction
- Unique compound for long original tread life and advanced cut resistance
- Tough construction for enhanced impact and cut resistance support

Size	Ply Rating	Tube	
		TT	TL
18.00-25	40PR	TT/TL	
18.00-25	44PR		TL

NOM IND-5S

Industrial and Port - Bias

Super Smooth Extra Tread Bias Loader Tire for Severe Operating Conditions



- Super extra deep tread depth offers maximum wear
- Smooth tread design eliminates tearing, delivers smooth ride and longer wear
- Unique compound for long tread life and advanced cut resistance
- Tough construction for enhanced impact and cut resistance support

Size	Ply Rating	Tube	
		TT	TL
12.00-24	24PR	TT	



NOM

TL530

Industrial and Port – Bias



Port Tire with Longer Wear

- Solid centerline section for longer wear and smooth ride
- Deep tread for long wear and improved traction
- Extra cap gum volume offers longer working hours
- Tough construction for enhanced impact and cut resistance support

Size	Ply Rating	Tube	
		TT	TL
18.00-25	40PR		TL



Features & Benefits



Deep tread for long wear and improved traction



Tough construction for enhanced impact and cut resistance support

NOM

TL619

Industrial and Port – Bias



Port Tire with Longer Wear

- Special compound design for excellent wear and cut performance
- Optimized casing design for good load capability under port operation
- Wide tread width offers excellent handling and stability

Size	Ply Rating	Tube	
		TT	TL
14.00-24	28PR	TT	
18.00-25	40PR	TL	



Features & Benefits



Wide tread width offers excellent handling and stability



Special compound design for excellent wear and cut performance



TR128

TR138

TR139



TB812

TL526



DESERT BIAS TIRES





TR128

NOM

Desert - Bias

Maximum Mobility Tire for Use in Soft, Fine Grain Sand



- Wide footprint and even wear rib design for minimum sinkage and adequate traction
- Unique compound for enhanced performance
- Tough construction for robust support in all wheel positions

Size	Ply Rating	Tube	
		TT	TL
66x44.00-25	20, 24PR		TL



NOM TR138

Desert - Bias

Mobility Tire for Sand Applications



- Wavy pattern design for flotation and control
- Shoulder sipe design for self cleaning
- Tough construction for robust support in all wheel positions

Size	Ply Rating	Tube	
		TT	TL
18-20	14PR		TL
29.5-25	28PR		TL

NOM TR139

Desert - Bias

Mobility Tire for Use in Soft, Fine Grain Sand



- Even wear rib design for minimum sinkage and adequate traction
- Unique compound for enhanced performance
- Tough construction for robust support in all wheel positions

Size	Ply Rating	Tube	
		TT	TL
21.00-25	16PR		TL
24-21	16PR		TL
27.25-21	16PR		TL

 **TRIANGLE**
Tires for all





NOM TB812

Desert - Bias

Multi-use Mobility Tire for On / Off Road Applications



- All purpose tread design for a balance of traction and even wear
- Unique compound for enhanced performance on multiple surface
- Tough construction for robust support in all wheel positions

Size	Ply Rating	Tube	
		TT	TL
24-21	14PR	TT	

NOM TL526

Desert - Bias

Maximum Mobility Tire for Use in Soft, Fine Grain Sand



- Special tread design for traction and grip
- Unilateral pattern design for self cleaning
- Wide tread and good flotation for sand service
- Tough case construction for robust support in all wheel positions

Size	Ply Rating	Tube	
		TT	TL
66x43.00-25	20,22,24PR		TL



C-1

TB822

R3

TL526



COMPACTOR BIAS TIRES





C-1

Compactor - Bias

NOM



Excellent Design for Tire-roller Application

- Smooth tread design for tire-roller application
- Special compound to prevent oil contamination and resistant to heat

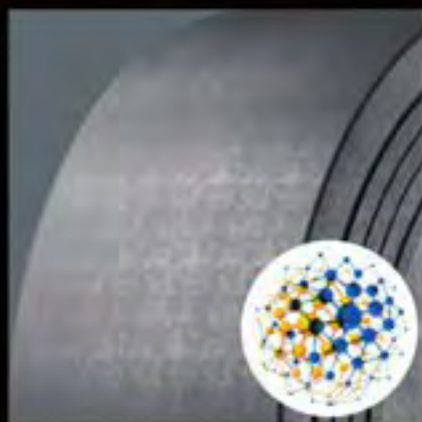
Size	Ply Rating	Tube	
		TT	TL
11.00-20	16PR	TT	
13/80-20	16PR	TT	



Features & Benefits



Smooth tread design for
tire-roller application



Special compound to prevent oil
contamination and resistant to
heat



TB822

NOM

Compactor - Bias

Mobility Tire for On / Off Road Applications



- All purpose tread design for a balance of traction and even wear
- Foot print offers smooth and comfortable ride
- Tough construction for robust support in all wheel positions

Size	Ply Rating	Tube	
		TT	TL
23.1-26	8, 12, 14PR	TT	



NOM R3

Compactor - Bias

Multi-use Mobility Tire for On / Off Road Applications



- All purpose tread design for a balance of traction and even wear
- Unique compound for enhanced performance on multiple surface
- Tough construction for robust support in all wheel positions

Size	Ply Rating	Tube	
		TT	TL
23.1-26	12,14PR		TL

NOM TL526

Compactor - Bias

Maximum Mobility Tire for Use in Soft, Fine Grain Sand



- Special tread design for traction and grip
- Unilateral pattern design for self cleaning
- Wide tread and good flotation for sand service
- Tough case construction for robust support in all wheel positions

Size	Ply Rating	Tube	
		TT	TL
23.1-26	12, 14PR		TL

TRIANGLE
Tires for Life



TL558

TL612

TL566

TL510

RIGID DUMP TRUCK BIAS TIRES



 **TRIANGLE**
Tires for Life





NOM TL558

Rigid Dump Truck - Bias

Multi-use Bias Tire Providing Greater Mobility



- Open pattern tread design for enhanced traction in off road conditions
- Unique compound to improve overall treadwear and cost per hour
- Tough bias construction for improved impact and cut resistance

Size	Ply Rating	Tube	
		TT	TL
13.00-25	28, 36PR	TT	
14.00-24	28, 36PR	TT	
14.00-25	36PR	TT	

NOM TL612

Rigid Dump Truck - Bias

Excellent Value, Multi-use Bias Tire for Rough Terrain



- Wide tread width improves mobility and offers a more comfortable ride
- Unique compound to improve overall treadwear and cost per hour
- Tough construction for enhanced impact resistance

Size	Ply Rating	Tube	
		TT	TL
16.00-25	28PR	TT/TL	
16.00-25	32PR	TL	
18.00-25	28,32,40PR	TT/TL	

 **TRIANGLE**
Tires for Life





NOM TL566

Rigid Dump Truck - Bias

Bias Tire for Dump Truck with Enhanced Traction



- Lug tread design with large blocks for outstanding traction
- Enhanced casing for heavy mining trucks
Specially formulated tread compound for cut and chip resistance

Size	Ply Rating	Tube	
		TT	TL
14.00-25	36PR	TT	

NOM TL510

Rigid Dump Truck - Bias

Traction Bias Tire with Longer Wear



- Solid centerline section for longer wear and smooth ride
- Deep tread for long wear and improved traction
- Unique compound for long original tread life and advanced cut resistance
- Tough construction for enhanced impact and cut resistance support

Size	Ply Rating	Tube	
		TT	TL
18.00-25	40PR	TT/TL	
18.00-25	44PR	TL	



L-4S

L-5S



UNDERGROUND MINING BIAS TIRES

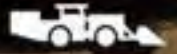




L-4S

NOM

Underground Mining – Bias



Smooth Extra Tread Underground Tire for Severe Operating Conditions

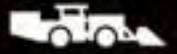
- Smooth tread design eliminates tearing, delivers smooth ride and longer wear
- Unique compound for long tread life and advanced cut resistance



L-5S

NOM

Underground Mining – Bias



Super Smooth Extra Tread Bias Loader Tire for Severe Operating Conditions

- Super extra deep tread depth offers maximum wear
- Smooth tread design eliminates tearing, delivers smooth ride and longer wear
- Unique compound for long tread life and advanced cut resistance
- Tough construction for enhanced impact and cut resistance support

L-4S

NOM

Size	Ply Rating	Tube	
		TT	TL
12.00-24	20, 24PR		TL

L-5S

NOM

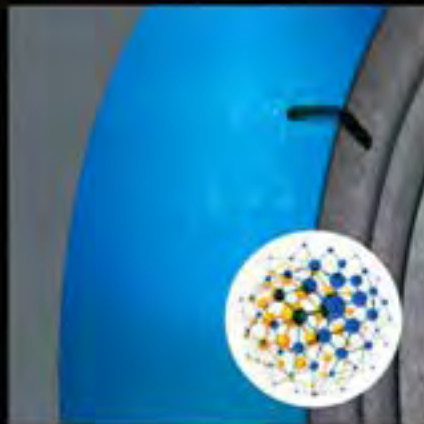
Size	Ply Rating	Tube	
		TT	TL
12.00-24	24PR	TT	
17.5-25	24PR	TT	
18.00-25	40PR	TT	
26.5-25	36PR	TL	



Features & Benefits

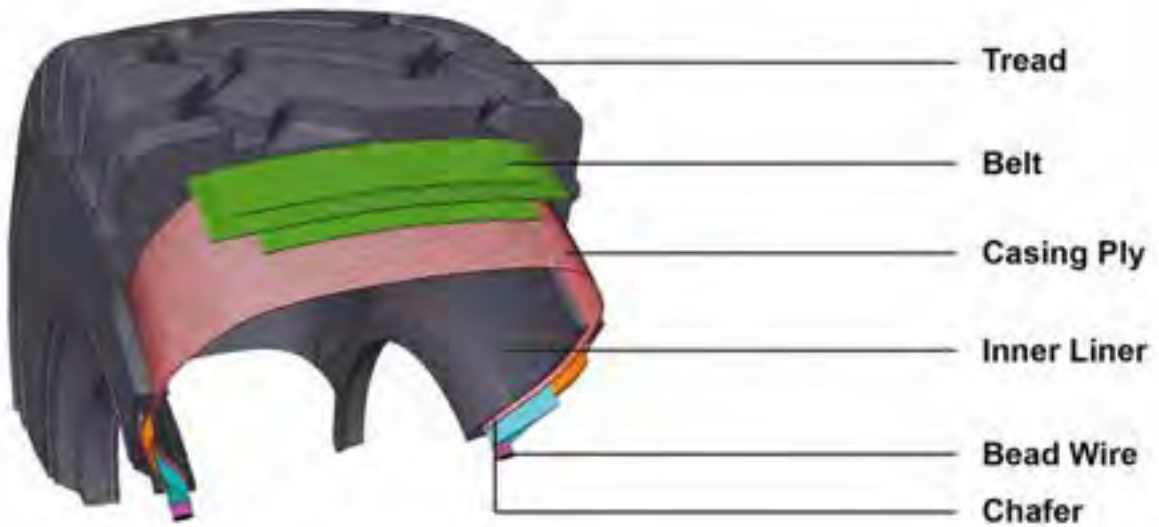


Smooth tread design eliminates tearing, delivers smooth ride and longer wear

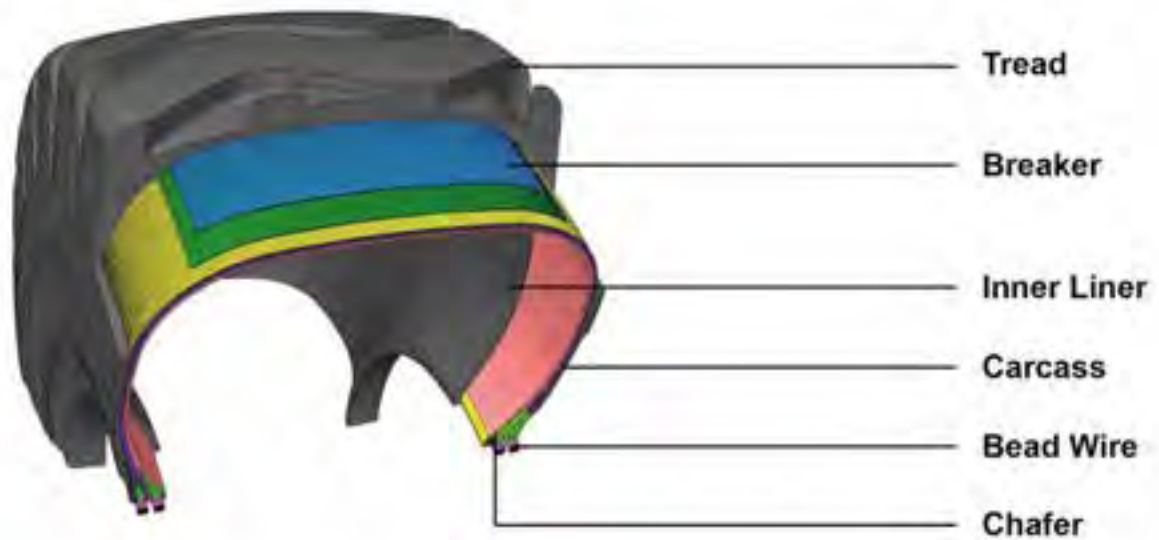


Unique compound for long tread life and advanced cut resistance

OFF-THE ROAD RADIAL TIRE (ORR)



OFF-THE ROAD BIAS TIRE (ORS)



Tire Markings



- | | |
|---|------------------------------|
| ① Product code | ⑦ Rim diameter(in inches):25 |
| ② Tire number | ⑧ Industry code: E-3 |
| ③ Nominal section width of the tire(in mm): 750 | ⑨ Tire compound:T2 |
| ④ Nominal section width of the tire(In inches):30 | ⑩ Tread pattern:TB598 |
| ⑤ Tire series: aspect ratio = 0.65 | ⑪ Load capability:★★ |
| ⑥ Radial structure:R | ⑫ Safety warning |
| | ⑬ Up/Bottom side:M/F |

Different Tread Depth

According to the classification of different tread depth, there are three series that can be chosen by their use of conditions.



Normal Tread
E2-E3-L2-L3-G2
100% design depth



Deep Tread
E4-L4-IND4
150% design depth



Extra Deep Tread
L5
250% design depth






Different Types Of Machinery

CODE	APPLICATION
C	Compactor
E	Transport
L	Loader and Bulldozer
G	Grader
IND	Industrial Vehicle

Tread Pattern

INDEX	PATTERN
1	RIBBED
2	TRACTION
3	ROCK
4	ROCK(deep tread)
5	ROCK(very-deep tread)
7	FLOTATION
5	SMOOTH

Application

CODE	TREAD PATTERN	APPLICATION
C1	SMOOTH	Compactor 
E2	TRACTION	 Transport
E3	ROCK	
E4	ROCK(deep tread)	
E7	FLOTATION	
L2	TRACTION	 Loader and Bulldozer
L3	ROCK	
L4	ROCK(deep tread)	
L5	ROCK(very-deep tread)	
L4S	SMOOTH(deep tread)	
L5S	SMOOTH(very-deep tread)	
G2	TRACTION	Grader 
IND3	ROCK	 Industrial Vehicle
IND4	ROCK(deep tread)	
IND5	ROCK(very-deep tread)	

Load Index - Speed Symbol

LOAD INDEX (LI) AND MAXIMUM LOAD (KG/LB)

The LOAD INDEX is a numerical code which indicates the maximum load a tire can carry at the speed corresponding to its speed symbol, under specified conditions.

LI	MAXIMUM LOAD		LI	MAXIMUM LOAD		LI	MAXIMUM LOAD		LI	MAXIMUM LOAD		LI	MAXIMUM LOAD	
	KG	LB		KG	LB		KG	LB		KG	LB		KG	LB
120	1400	3090	150	3350	7390	180	8000	17640	210	19000	41890	240	45000	99210
121	1450	3200	151	3450	7610	181	8250	18190	211	19500	43000	241	46250	101960
122	1500	3310	152	3550	7830	182	8500	18740	212	20000	44100	242	47500	104720
123	1550	3420	153	3650	8050	183	8750	19290	213	20500	45200	243	48750	107470
124	1600	3530	154	3750	8270	184	9000	19840	214	21000	46300	244	50000	110230
125	1650	3640	155	3875	8540	185	9250	20390	215	21500	47400	245	51250	112980
126	1700	3750	156	4000	8820	186	9500	20940	216	22000	48500	246	52500	115730
127	1750	3860	157	4125	9090	187	9750	21500	217	22500	49600	247	53750	118480
128	1800	3970	158	4250	9370	188	10000	22050	218	23000	50700	248	55000	121230
129	1850	4080	159	4375	9650	189	10250	22710	219	23500	51800	249	56250	123980
130	1900	4190	160	4500	9920	190	10500	23270	220	24000	52900	250	57500	126730
131	1950	4300	161	4625	10200	191	10750	23830	221	24500	54000	251	58750	129480
132	2000	4410	162	4750	10470	192	11000	24390	222	25000	55100	252	60000	132230
133	2050	4520	163	4875	10750	193	11250	24950	223	25500	56200	253	61250	134980
134	2100	4630	164	5000	11020	194	11500	25510	224	26000	57300	254	62500	137730
135	2180	4810	165	5150	11350	195	12150	26790	225	29000	63940	255	69000	152120
136	2240	4940	166	5300	11690	196	12500	27560	226	30000	66150	256	71000	156530
137	2300	5070	167	5450	12020	197	12850	28330	227	30750	67390	257	73000	160930
138	2360	5200	168	5600	12390	198	13200	29100	228	31500	68660	258	75000	165340
139	2430	5360	169	5800	12790	199	13600	29990	229	32500	71660	259	77500	170660
140	2500	5510	170	6000	13290	200	14000	30870	230	33500	73870	260	80000	176000
141	2575	5680	171	6150	13580	201	14500	31970	231	34500	76070	261	82500	181890
142	2650	5840	172	6300	13890	202	15000	33070	232	35500	78280	262	85000	187390
143	2725	6010	173	6500	14330	203	15500	34190	233	36500	80480	263	87500	192900
144	2800	6170	174	6700	14770	204	16000	35280	234	37500	82690	264	90000	198450
145	2900	6390	175	6900	15210	205	16500	36380	235	38750	85490	265	92500	203920
146	3000	6610	176	7100	15690	206	17000	37480	236	40000	88200	266	95000	209440
147	3075	6780	177	7300	16090	207	17500	38590	237	41250	90940	267	97500	214960
148	3150	6950	178	7500	16530	208	18000	39690	238	42500	93710	268	100000	220500
149	3250	7170	179	7750	17090	209	18500	40790	239	43750	96470	269	103000	227370

Speed Symbols

The SPEED SYMBOL indicates the maximum speed at which the tire can carry a load corresponding to its load index, under specified conditions.

CODE	A1	A2	A3	A4	A5	A6	A8	B	C	D	E	F	G
Speed(km/h)	5	10	15	20	25	30	40	50	60	65	70	80	90
Speed(mph)	3	5	9	12	15	20	25	30	35	40	43	50	55

Examples of Tire marking:

17.5R25TBS16170 A2: this tire is able to carry 7100kg at a maximum speed of 10 km/h (1550 lb at 5 mph).

385/55R25 TR175-170 F: this tire is able to carry 6000kg at a maximum speed of 80 km/h (13200 lb at 50 mph).

Equivalence Of Resistance Index

To be used as a reference for the replacement of a bias ply tire by a TRIANGLE radial tire.

SIZE	TRANSPORT MACHINES PR	WORK MACHINES PR	SIZE	TRANSPORT MACHINES PR	WORK MACHINES PR	SIZE	TRANSPORT MACHINES PR	WORK MACHINES PR
13.00R25***	28	24	20.5R25*		24	24.00R35**	48	
14.00R24*		16	20.5R25**	26		35.00R33**	36	
14.00R24**			23.5R25*		28	750/65R25**		
14.00R24***	32	28	23.5R25**	32		750/65R25**		
14.00R25*			26.5R25*		32	775/65R29*		
14.00R25**			26.5R25**	32		775/65R29**		
14.00R25***	32		29.5R25*		34	875/65R29*		
16.00R25*			29.5R25**	34		875/65R29**		
16.00R25**	36		29.5R29*		34	77.00R49**	54	
16.00R25***			29.5R29**	40		33.00R51**	66	
17.5R29*		16	33.25R29**			36.00R51**	70	
17.5R29**	24	20	33.25R29**	44		37.00R52**	78	
18.00R25*		24	18.00R33**	40		40.00R52**	80	
18.00R25**	36		21.00R33**	44				
18.00R25***			21.00R35**	44				

TKPH is an essential element for correctly choosing earth mover and mining tires. Heat builds up when these vehicles operate with heavy load and fast speed. Tire TKPH gives a safe range to avoid early durability issue.

Formula for Calculation of Operating TKPH

$$\text{TKPH} = \text{Mean Tire-Load} \times \text{Average Work Shift Speed}$$



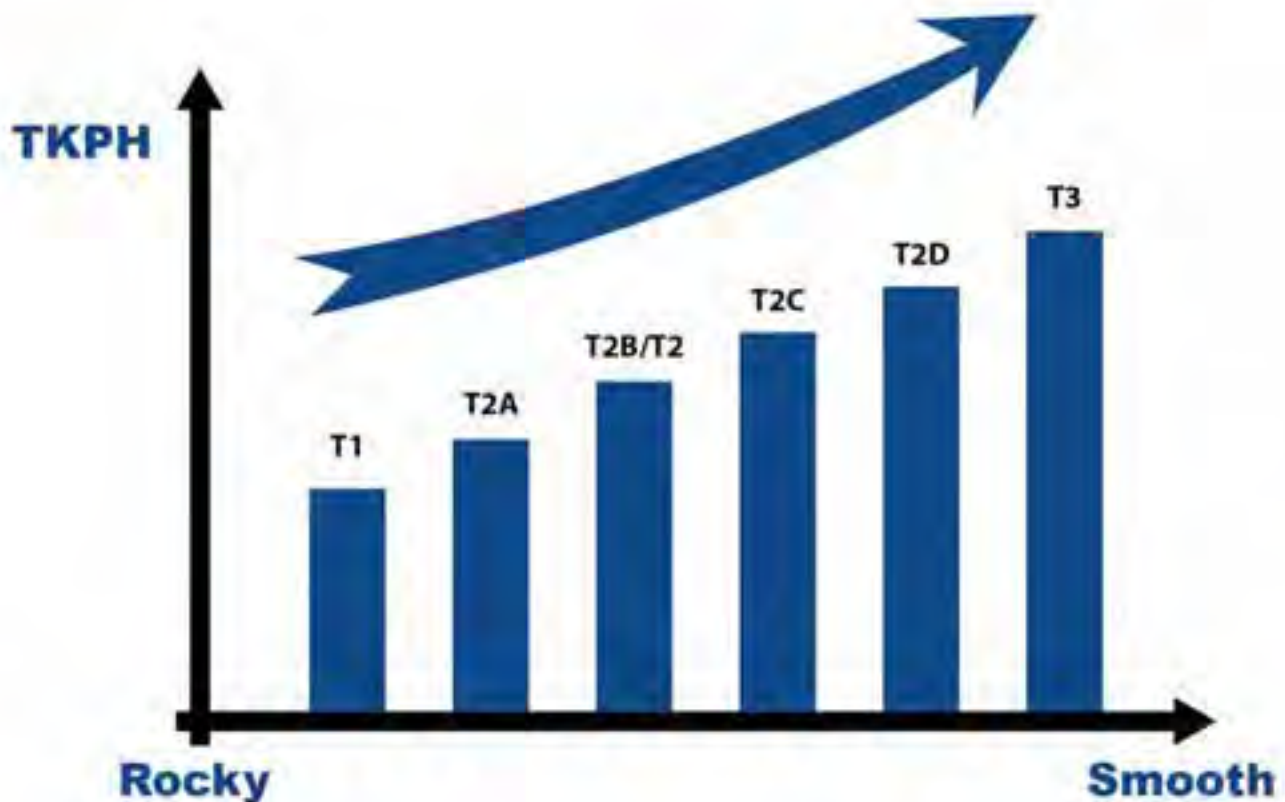
$$\frac{\text{Icon of empty truck} + \text{Icon of loaded truck}}{2} \times \frac{\text{Round Trip Distance (in km)} \times \text{Number of Round Trips per Shift}}{\text{Total Working Hrs per Shift}}$$

Tire TKPH varies on design of size, tread pattern, compound, environment temperature and trip distance, etc. High TKPH tire generates lower heat while sacrifice cut and wear performances.

Please contact Triangle technical staff for correct choosing of tires.

Different Triangle OTR Tire Compounds

T1	Particularly resistant to wearing, cuts and tread tearing on very rough surfaces at low speed.
T2A	Compromise solution between abrasion resistance and average speed with a higher heat resistance than T1 on rough surfaces.
T2B/T2	Standard tire compounds between abrasion resistance and average speed with a higher heat resistance than T2A.
T2C	Tire compounds with a higher heat resistance than T2B/T2.
T2D	Tire compounds with a higher heat resistance than T2C.
T3	Adapted to running on long cycles at high speeds on well-maintained roads.
T5	Special rubber compound for ice and snow.



TRIANGLE OTR SELECTION

A Size & Construction		B Tread Pattern			Vehicle Type		
					C Vehicle Type	D Tread Type	E Compound
Radial	23.5 R 25 **	TB598S	E 4	T3			
Bias	23.5 - 25 16PR	TL516	L 3	T2			

A Tire Size/ Construction	Load	Description
Radial	Star Rating (*, **, ***)	23.5R25**
Bias Ply	Ply Rating	23.5-25(20PR)

Refer Load/Inflation tables for full Tyre Load details associated with individual sizes.



See OTR Catalogue for full Pattern Options

C Industry Code(Vehicle Type)

Code	Application(Vehicle Type)	Task Speed @ Distance
E	Earthmover (Rigid Dump Truck/ ATD-Articulated Dump Truck)	Up to 50km/h & 4km one way.
L	Loader(or Dozer)	Up to 10km/h & 76m one way.
G	Grader	Up to 40km/h & Continuous
C	Compactor	Up to 10km/h & Continuous

D Industry Code(Tread Requirement)?

Code	Type	Tread Depth
1	Rib	Regular
2	Traction	Regular
3	Rock	Regular
4	Rock	Deep(150%)
5	Rock	Extra Deep(250%)
7	Flotation	Regular
S	Smooth	Varies(Eg:4S or 5S)

E Tread compound and TKPH

Code	Description	Characteristics(Speed/Wear/Temp)
T1	Abrasion Resistant	Slow Speed/Longest Wearing/Hot running
T2	Standard	Normal Speed/Medium Wear/Average Running
T3	Heat Resistant	High speed/Faster Wear/Cooler Running

Size	Pattern	Star Rating	Ind Code	Tread Depth		Performance Capability (TKPH)			
				32nds	mm	T1	T2A	T2	T3
21.00R35	TB526S	★★	E-4	75.6	60.0	195	220	250	299
24.00R35	TB526S	★★	E-4	81.9	65.0	205	224	225	311

Remarks

Sometimes, the actual payload in certain operation may exceed the standard. Then tire load may exceed the load rating above mentioned. When we have such overloading situation, cold inflation pressure must be increased to compensate the higher loads. For each 1% increase in load, 2% increase in inflation pressure is a must to avoid tire damage.

Tire performances may be greatly impacted by overloading. **Please contact Triangle technical staff to correctly using of tires.**

Unit Conversion Table

INFLATION PRESSURE

kg/cm ²	psi	kPa	bar
0.1	1	10	0.1
0.2	3	20	0.2
0.3	4	30	0.3
0.4	6	40	0.4
0.5	7	50	0.5
0.6	9	60	0.6
0.7	10	70	0.7
0.8	11	80	0.8
0.9	13	90	0.9
1.0	14	100	1.0
1.1	16	110	1.1
1.2	17	120	1.2
1.3	18	130	1.3
1.4	20	140	1.4
1.5	21	150	1.5
1.6	23	160	1.6
1.7	24	170	1.7
1.8	26	180	1.8
1.9	27	190	1.9
2.0	28	200	2.0
2.1	30	210	2.1
2.2	31	220	2.2
2.3	33	230	2.3
2.4	34	240	2.4
2.5	36	250	2.5

kg/cm ²	psi	kPa	bar
2.6	37	250	2.5
2.7	38	260	2.6
2.8	40	270	2.7
2.9	41	280	2.8
3.0	43	290	2.9
3.1	44	300	3.0
3.2	45	310	3.1
3.3	47	320	3.2
3.4	48	330	3.3
3.5	50	340	3.4
3.6	51	350	3.5
3.7	51	360	3.6
3.8	54	370	3.7
3.9	55	380	3.8
4.0	57	390	3.9
4.1	58	400	4.0
4.2	60	410	4.1
4.3	61	420	4.2
4.4	62	430	4.3
4.5	64	440	4.4
4.6	65	450	4.5
4.7	67	460	4.6
4.8	68	470	4.7
4.9	70	480	4.8
5.0	71	490	4.9

Unit Conversion Table

INFLATION PRESSURE

kg/cm ²	psi	kPa	bar
5.1	72	490	4.9
5.2	74	500	5.0
5.3	75	510	5.1
5.4	77	520	5.2
5.5	78	530	5.3
5.6	80	540	5.4
5.7	81	550	5.5
5.8	82	560	5.6
5.9	84	570	5.7
6.0	85	580	5.8
6.1	87	590	5.9
6.2	88	600	6.0
6.3	89	610	6.1
6.4	91	620	6.2
6.5	92	630	6.3
6.6	94	640	6.4
6.7	95	650	6.5
6.8	97	660	6.6
6.9	98	670	6.7
7.0	99	680	6.8
7.1	101	690	6.9
7.2	102	700	7.0
7.3	104	710	7.1
7.4	105	720	7.2
7.5	107	730	7.3

kg/cm ²	psi	kPa	bar
7.6	108	740	7.4
7.7	109	750	7.5
7.8	111	760	7.6
7.9	112	770	7.7
8.0	114	780	7.8
8.1	115	790	7.9
8.2	116	800	8.0
8.3	118	810	8.1
8.4	119	820	8.2
8.5	121	830	8.3
8.6	122	840	8.4
8.7	124	850	8.5
8.8	125	860	8.6
8.9	126	870	8.7
9.0	128	880	8.8
9.1	129	890	8.9
9.2	131	900	9.0
9.3	132	910	9.1
9.4	133	920	9.2
9.5	135	930	9.3
9.6	136	940	9.4
9.7	138	950	9.5
9.8	139	960	9.6
9.9	141	970	9.7
10.0	142	980	9.8

Unit Conversion Table

WEIGHT

kg	lb	kg	lb	kg	lb	kg	lb
1	2.2	130	286.6	600	1322.8	2500	5511.5
5	11.0	140	308.6	650	1433.0	2600	5732.0
10	22.0	150	330.7	700	1543.2	2700	5952.4
15	33.1	160	352.7	750	1653.5	2800	6173.0
20	44.1	170	374.8	800	1763.7	2900	6393.3
25	55.1	180	396.8	850	1873.9	3000	6613.8
30	66.1	190	418.9	900	1984.1	3500	7716.1
35	77.2	200	440.9	950	2094.4	4000	8818.4
40	88.2	210	463.0	1000	2204.6	4500	9920.7
45	99.2	220	485.0	1100	2425.1	5000	11023.0
50	110.2	230	507.1	1200	2645.5	5500	12125.3
55	121.3	240	529.1	1300	2866.0	6000	13227.6
60	132.3	250	551.2	1400	3086.4	6500	14329.9
65	143.3	260	573.2	1500	3306.9	7000	15432.2
70	154.3	270	595.2	1600	3527.4	7500	16534.5
75	165.3	280	617.3	1700	3747.8	8000	17636.8
80	176.4	290	639.3	1800	3968.3	8500	18739.1
85	187.4	300	661.4	1900	4188.7	9000	19841.4
90	198.4	350	771.6	2000	4409.2	9500	20943.7
95	209.4	400	881.8	2100	4629.7	10000	22046.0
100	220.5	450	992.1	2200	4850.1		
110	242.5	500	1102.3	2300	5070.6		
120	264.6	550	1212.5	2400	5291.0		

Unit Conversion Table

TEMPERATURE

°C	°F	°C	°F	°C	°F	°C	°F	°C	°F	°C	°F
-19	-2.2	11	51.8	41	105.8	71	159.8	101	213.8	131	267.8
-18	-0.4	12	53.6	42	107.6	72	161.6	102	215.6	132	269.6
-17	1.4	13	55.4	43	109.4	73	163.4	103	217.4	133	271.4
-16	3.2	14	57.2	44	111.2	74	165.2	104	219.2	134	273.2
-15	5.0	15	59.0	45	113.0	75	167.0	105	221.0	135	275.0
-14	6.8	16	60.8	46	114.8	76	168.8	106	222.8	136	276.8
-13	8.6	17	62.6	47	116.6	77	170.6	107	224.6	137	278.6
-12	10.4	18	64.4	48	118.4	78	172.4	108	226.4	138	280.4
-11	12.2	19	66.2	49	120.2	79	174.2	109	228.2	139	282.2
-10	14.0	20	68.0	50	122.0	80	176.0	110	230.0	140	284.0
-9	15.8	21	69.8	51	123.8	81	177.8	111	231.8	141	285.8
-8	17.6	22	71.6	52	125.6	82	179.6	112	233.6	142	287.6
-7	19.4	23	73.4	53	127.4	83	181.4	113	235.4	143	289.4
-6	21.2	24	75.2	54	129.2	84	183.2	114	237.2	144	291.2
-5	23.0	25	77.0	55	131.0	85	185.0	115	239.0	145	293.0
-4	24.8	26	78.8	56	132.8	86	186.8	116	240.8	146	294.8
-3	26.6	27	80.6	57	134.6	87	188.6	117	242.6	147	296.6
-2	28.4	28	82.4	58	136.4	88	190.4	118	244.4	148	298.4
-1	30.2	29	84.2	59	138.2	89	192.2	119	246.2	149	300.2
0	32.0	30	86.0	60	140.0	90	194.0	120	248.0	150	302.0
1	33.8	31	87.8	61	141.8	91	195.8	121	249.8	160	320.0
2	35.6	32	89.6	62	143.6	92	197.6	122	251.6	170	338.0
3	37.4	33	91.4	63	145.4	93	199.4	123	253.4	180	356.0
4	39.2	34	93.2	64	147.2	94	201.2	124	255.2	190	374.0
5	41.0	35	95.0	65	149.0	95	203.0	125	257.0	200	392.0
6	42.8	36	96.8	66	150.8	96	204.8	126	258.8		
7	44.6	37	98.6	67	152.6	97	206.6	127	260.6		
8	46.4	38	100.4	68	154.4	98	208.4	128	262.4		
9	48.2	39	102.2	69	156.2	99	210.2	129	264.2		
10	50.0	40	104.0	70	158.0	100	212.0	130	266.0		

Unit Conversion Table

TREAD DEPTH

mm	inch/32	mm	inch/32	mm	inch/32	mm	inch/32
1	1.3	19	23.9	37	46.6	75	95.5
2	2.5	20	25.2	38	47.9	80	100.8
3	3.8	21	26.5	39	49.1	85	107.1
4	5.0	22	27.7	40	50.4	90	113.4
5	6.3	23	29.0	41	51.7	95	119.7
6	7.6	24	30.2	42	52.9	100	126.0
7	8.8	25	31.5	43	54.2	105	132.3
8	10.1	26	32.8	44	55.4	110	138.6
9	11.3	27	34.0	45	56.7	115	144.9
10	12.6	28	35.3	46	58.0	120	151.2
11	13.9	29	36.5	47	59.2	125	157.5
12	15.1	30	37.8	48	60.5	130	163.8
13	16.4	31	39.1	49	61.7	135	170.1
14	17.6	32	40.3	50	63.0	140	176.4
15	18.9	33	41.6	55	69.3	145	182.7
16	20.2	34	42.8	60	75.6	150	189.0
17	21.4	35	44.1	65	81.9		
18	22.7	36	45.4	70	88.2		

Triangle Radial Tire

24"

Size	Pattern	Star Rating	Ind Code	Rim Width & Flange	Min. Dual Spacing		Approximate Inflated Dimensions				Loaded Dimensions		Tread Depth		Performance Capability (TKPH)				Tube	
							Overall Width		Overall Diameter		Static Load Radius				T1	T2A	T2	T3	T1	T2
					in	mm	in	mm	in	mm	in	mm	32nds	mm						
14.00R24 TG	T8546	★	L-2 G-2	10.00VA SDC (R.00GR)	17.7	450	14.8	375	53.9	1368			31.5	25.0						TL

Loader and Bulldozer

10KM/H (5MPH)	KPa/PSI	550/80	
	KG/LBS	6900*/15200*	

Grader

40KM/H (25MPH)	KPa/PSI	200/29	225/33	250/36	275/40	300/44	325/47	350/51	375/54	
	KG/LBS	2240/4940	2430/5360	2650/5840	2800/6150	3000/6600	3250/7150	3350/7400	3650*/8050*	

Size	Pattern	Star Rating	Ind Code	Rim Width & Flange	Min. Dual Spacing		Approximate Inflated Dimensions				Loaded Dimensions		Tread Depth		Performance Capability (TKPH)				Tube	
							Overall Width		Overall Diameter		Static Load Radius				T1	T2A	T2	T3	T1	T2
					in	mm	in	mm	in	mm	in	mm	32nds	mm						
14.00R24 TG	T8545	★	L-2 G-2	10.00VA SDC (R.00GR)	17.7	450	14.8	375	53.9	1368			31.5	25.0						TL

Loader and Bulldozer

10KM/H (5MPH)	KPa/PSI	550/80	
	KG/LBS	6900*/15200*	

Grader

10KM/H (5MPH)	KPa/PSI	200/29	225/33	250/36	275/40	300/44	325/47	350/51	375/54	
	KG/LBS	2240/4940	2430/5360	2650/5840	2800/6150	3000/6600	3250/7150	3350/7400	3650*/8050*	

Size	Pattern	Star Rating	Ind Code	Rim Width & Flange	Min. Dual Spacing		Approximate Inflated Dimensions				Loaded Dimensions		Tread Depth		Performance Capability (TKPH)				Tube									
							Overall Width		Overall Diameter		Static Load Radius				T1	T2A	T2	T3	T1	T2								
					in	mm	in	mm	in	mm	in	mm	32nds	mm														
14.00R24 TG	T8536	★	L-2 G-2	10.00VA SDC (R.00GR)	17.7	450	14.8	375	53.9	1368			31.5	25.0					TL									
14.00R24		★★	E-2	10.00W																								
		★★★																										

Loader and Bulldozer

10KM/H (5MPH)	KPa/PSI	550/80	
	KG/LBS	6900*/15200*	

Grader

40KM/H (25MPH)	KPa/PSI	200/29	225/33	250/36	275/40	300/44	325/47	350/51	375/54	
	KG/LBS	2240/4940	2430/5360	2650/5840	2800/6150	3000/6600	3250/7150	3350/7400	3650*/8050*	

Rigid Dump Truck

50KM/H (30MPH)	KPa/PSI	500/73	525/76	550/80	575/81	600/87	625/91	650/94	675/98	700/102	700/102	
	KG/LBS	4375/9650	4500/9900	4625/10200	4750/10500	5000/11000	5150/11400	5300/11700	5450/12000	5600**/12300**	5800**/12760**	

Size	Pattern	Star Rating	Ind Code	Rim Width & Flange	Min. Dual Spacing		Approximate Inflated Dimensions				Loaded Dimensions		Tread Depth		Performance Capability (TKPH)				Tube	
					in	mm	in	mm	in	mm	in	mm	in	mm	in	mm	T1	T2A	T2	T3
14.00R24	TB515	★	G-2	10.00W	17.7	450	14.8	375	53.9	1368			31.5	25.0						TL

Grader

40KM/H (25MPH)	KPa/PSI	200/29	225/33	250/36	275/40	300/44	325/47	350/51	375/54											
	KG/LBS	2245/4940	2430/5360	2650/5840	2800/6150	3000/6600	3250/7150	3350/7400	3650/8050*											

Size	Pattern	Star Rating	Ind Code	Rim Width & Flange	Min. Dual Spacing		Approximate Inflated Dimensions				Loaded Dimensions		Tread Depth		Performance Capability (TKPH)				Tube				
					in	mm	in	mm	in	mm	in	mm	in	mm	in	mm	T1	T2A	T2	T3	T1	TL	
14.00R24	TB515	★	E-4	10.00W	17.7	450	14.8	375	55.8	1418			45.4	36.0						TL			
		★★																					
		★★★																					
		★★★★RF																					

Rigid Dump Truck

10KM/H (5MPH)	KPa/PSI	900/131																		
	KG/LBS	10000**/9/22000**/9F																		
50KM/H (30MPH)	KPa/PSI	500/78	525/76	550/80	575/83	600/87	625/91	650/94	675/98	700/102	700/102	900/131								
	KG/LBS	4375/9650	4500/9900	4625/10200	4750/10500	5000/11000	5150/11400	5300/11700	5450/12000	5600**/12300**	5800**/12750**	7000**/15400**/9F								

Size	Pattern	Star Rating	Ind Code	Rim Width & Flange	Min. Dual Spacing		Approximate Inflated Dimensions				Loaded Dimensions		Tread Depth		Performance Capability (TKPH)				Tube	
					in	mm	in	mm	in	mm	in	mm	in	mm	in	mm	T1	T2A	T2	T3
14.00R24	TL560	★★★★RF	E-3	10.00W	17.7	450	14.8	375	53.9	1368			32.8	26.0						TL

Rigid Dump Truck

10KM/H (5MPH)	KPa/PSI	900/131																		
	KG/LBS	10000**/9/22000**/9F																		
50KM/H (30MPH)	KPa/PSI	900/131																		
	KG/LBS	7000**/9/15400**/9F																		

Size	Pattern	Star Rating	Ind Code	Rim Width & Flange	Min. Dual Spacing		Approximate Inflated Dimensions				Loaded Dimensions		Tread Depth		Performance Capability (TKPH)				Tube	
					in	mm	in	mm	in	mm	in	mm	in	mm	in	mm	T1	T2A	T2	T3
385/95R24 170F ROAD(14.00R24)	TB586	★★★	E-2	10.00W	17.7	450	14.9	379	53.9	1369			27.7	22.0						TL

Mobile Crane

40KM/H (50MPH)	KPa/PSI	725/105	750/109	775/112	800/116	825/120	850/123	875/127	900/131											
	KG/LBS	5000/11000	5150/11400	5300/11700	5450/12000	5600/12300	5800/12600	5800/12600	6000**/13200**											

Size	Pattern	Star Rating	Ind Code	Rim Width & Flange	Min. Dual Spacing		Approximate Inflated Dimensions				Loaded Dimensions		Tread Depth		Performance Capability (TKPH)				Tube	
					in	mm	in	mm	in	mm	in	mm	in	mm	in	mm	T1	T2A	T2	T3
385/95R24 170F ROAD(14.00R24)	TB576	★★★	E-2	10.00W	17.7	450	14.9	379	53.9	1369			27.7	22.0						TL

Mobile Crane

10KM/H (5MPH)	KPa/PSI	725/105	750/109	775/112	800/116	825/120	850/123	875/127	900/131											
	KG/LBS	5000/11000	5150/11400	5300/11700	5450/12000	5600/12300	5800/12600	5800/12600	6000**/13200**											

25"

Size	Pattern	Star Rating	Ind Code	Rim Width & Flange	Min. Dual Spacing		Approximate Inflated Dimensions				Loaded Dimensions		Tread Depth		Performance Capability (TKPH)				Tube	
					in	mm	Overall Width		Overall Diameter		Static Load Radius		32nds	mm	T1	T2A	T2	T3	T1	T2
							in	mm	in	mm	in	mm								
13.00R25(10.00 Rim)	TL509	★★★	E-3	10.00/2.0	16.7	434	13.8	350	51.2	1300			31.5	25.0					TT	
13.00R25(8.50 Rim)				8.50/2.0											10.00/1.5	8.50/1.3				

Rigid Dump Truck

10KM/H (5MPH)	KPa/PSI	950/138
	KG/LBS	8500**/18740**
50KM/H (30MPH)	KPa/PSI	700/102
	KG/LBS	4875**/10750**

Size	Pattern	Star Rating	Ind Code	Rim Width & Flange	Min. Dual Spacing		Approximate Inflated Dimensions				Loaded Dimensions		Tread Depth		Performance Capability (TKPH)				Tube	
					in	mm	Overall Width		Overall Diameter		Static Load Radius		32nds	mm	T1	T2A	T2	T3	T1	T2
							in	mm	in	mm	in	mm								
14.00R25	TL509	★★★RF	E-3	10.00/2.0	17.7	450	14.8	375	53.9	1368	24.5	623	32.8	26.0					TT	
																			TL	

Rigid Dump Truck

10KM/H (5MPH)	KPa/PSI	900/131
	KG/LBS	10000**/22000**
50KM/H (30MPH)	KPa/PSI	900/131
	KG/LBS	7000**/15400**

Size	Pattern	Star Rating	Ind Code	Rim Width & Flange	Min. Dual Spacing		Approximate Inflated Dimensions				Loaded Dimensions		Tread Depth		Performance Capability (TKPH)				Tube	
					in	mm	Overall Width		Overall Diameter		Static Load Radius		32nds	mm	T1	T2A	T2	T3	T1	T2
							in	mm	in	mm	in	mm								
14.00R25	TL509A	★★★RF	E-3	10.00/2.0	17.7	450	14.8	375	53.9	1368	24.7	623	32.8	26.0					TT/TL	

Rigid Dump Truck

10KM/H (5MPH)	KPa/PSI	900/131
	KG/LBS	10000**/22000**
50KM/H (30MPH)	KPa/PSI	900/131
	KG/LBS	7000**/15400**

Size	Pattern	Star Rating	Ind Code	Rim Width & Flange	Min. Dual Spacing		Approximate Inflated Dimensions				Loaded Dimensions		Tread Depth		Performance Capability (TKPH)				Tube	
					in	mm	Overall Width		Overall Diameter		Static Load Radius		32nds	mm	T1	T2A	T2	T3	T1	T2
							in	mm	in	mm	in	mm								
14.00R25	TL509A(R)	★★★RF	E-3	10.00/2.0	17.7	450	14.8	375	53.9	1368	24.7	623	32.8	26.0					TT	

Rigid Dump Truck

10KM/H (5MPH)	KPa/PSI	900/131
	KG/LBS	10000**/22000**
50KM/H (30MPH)	KPa/PSI	900/131
	KG/LBS	7000**/15400**

Size	Pattern	Star Rating	Ind Code	Rim Width & Flange	Min. Dual Spacing		Approximate Inflated Dimensions				Loaded Dimensions		Tread Depth		Performance Capability (TKPH)				Tube			
					in	mm	Overall Width		Overall Diameter		Static Load Radius		32nds	mm	T1	T2A	T2	T3	T1	TL		
							in	mm	in	mm	in	mm										
14.00R25	TBS165	★★★ ★★★ ★★★RF	E-4	10.00/1.5	17.7	450	14.8	375	55.8	1418			45.4	36.0			85		105	130		TL

Rigid Dump Truck

10KM/H (5MPH)	KPa/PSI	900/131															
	KG/LBS	10000**RF/22000**RF															
50KM/H (30MPH)	KPa/PSI	500/73	525/76	550/80	575/83	600/87	625/91	650/94	675/98	700/102	700/102	900/131					
	KG/LBS	4375/9650	4500/9900	4625/10200	4750/10500	5000/11000	5150/11400	5300/11700	5450/12000	5600**/12300**	5600**/12300**	7000**RF/15400**RF					

Size	Pattern	Star Rating	Ind Code	Rim Width & Flange	Min. Dual Spacing		Approximate Inflated Dimensions				Loaded Dimensions		Tread Depth		Performance Capability (TKPH)				Tube		
					in	mm	Overall Width		Overall Diameter		Static Load Radius		32nds	mm	T1	T2A	T2	T3	T1	TL	
							in	mm	in	mm	in	mm									
14.00R25	TBS26	★★★RF	E-3	10.00/2.0	17.7	450	14.8	375	53.9	1368	24.4	621	32.8	26.0							TL

Rigid Dump Truck

10KM/H (5MPH)	KPa/PSI	900/131													
	KG/LBS	10000**RF/22000**RF													
50KM/H (30MPH)	KPa/PSI	900/131													
	KG/LBS	7000**RF/15400**RF													

Size	Pattern	Star Rating	Ind Code	Rim Width & Flange	Min. Dual Spacing		Approximate Inflated Dimensions				Loaded Dimensions		Tread Depth		Performance Capability (TKPH)				Tube	
					in	mm	Overall Width		Overall Diameter		Static Load Radius		32nds	mm	T1	T2A	T2	T3	T1	TL
							in	mm	in	mm	in	mm								
14.00R25	TBS36	★★★	E-2	10.00/1.5	17.7	450	14.8	375	53.9	1368			31.5	25.0	110		140	170		TL

Rigid Dump Truck

50KM/H (30MPH)	KPa/PSI	500/73	525/76	550/80	575/83	600/87	625/91	650/94	675/98	700/102	700/102					
	KG/LBS	4375/9650	4500/9900	4625/10200	4750/10500	5000/11000	5150/11400	5300/11700	5450/12000	5600**/12300**	5600**/12300**					

Industrial and Port

25KM/H (15MPH)	KPa/PSI	900/131													
	KG/LBS	7300**/16100**													

Size	Pattern	Star Rating	Ind Code	Rim Width & Flange	Min. Dual Spacing		Approximate Inflated Dimensions				Loaded Dimensions		Tread Depth		Performance Capability (TKPH)				Tube		
					in	mm	Overall Width		Overall Diameter		Static Load Radius		32nds	mm	T1	T2A	T2	T3	T1	TL	
							in	mm	in	mm	in	mm									
14.00R25	TBS6	★★★RF	E-2	10.00/2.0	17.7	450	14.8	375	51.9	1368			27.7	22.0							TL

Rigid Dump Truck

10KM/H (5MPH)	KPa/PSI	900/131													
	KG/LBS	10000**RF/22000**RF													
50KM/H (30MPH)	KPa/PSI	900/131													
	KG/LBS	7000**RF/15400**RF													

Size	Pattern	Star Rating	Ind Code	Rim Width & Flange	Min. Dual Spacing		Approximate Inflated Dimensions				Loaded Dimensions		Tread Depth		Performance Capability (TKPH)				Tube	
							Overall Width		Overall Diameter		Static Load Radius				T1	T2A	T2	T3	T1	T2
					in	mm	in	mm	in	mm	in	mm	in	mm	32nds	mm				
385/95R25 170F ROAD(14.00R25)	T85A6	★★★	E-2	10.00/1.5	17.7	450	14.8	378	53.9	1368			27.7	22.0						TL

Mobile Crane

80KM/H (50MPH)	KPa/PSI	725/105	750/109	775/112	800/116	825/120	850/123	875/127	900/131											
	KG/LBS	5000/11000	5150/11400	5300/11700	5450/12000	5600/12300	5800/12800	5800/12800	6000***/13200***											

Size	Pattern	Star Rating	Ind Code	Rim Width & Flange	Min. Dual Spacing		Approximate Inflated Dimensions				Loaded Dimensions		Tread Depth		Performance Capability (TKPH)				Tube	
							Overall Width		Overall Diameter		Static Load Radius				T1	T2A	T2	T3	T1	T2
					in	mm	in	mm	in	mm	in	mm	in	mm	32nds	mm				
385/95R25 170F ROAD(14.00R25)	T8576	★★★	E-2	10.00/1.5	17.7	450	14.9	378	53.9	1369	24.7	627	27.7	22.0						TL

Mobile Crane

80KM/H (50MPH)	KPa/PSI	725/105	750/109	775/112	800/116	825/120	850/123	875/127	900/131											
	KG/LBS	5000/11000	5150/11400	5300/11700	5450/12000	5600/12300	5800/12800	5800/12800	6000***/13200***											

Size	Pattern	Star Rating	Ind Code	Rim Width & Flange	Min. Dual Spacing		Approximate Inflated Dimensions				Loaded Dimensions		Tread Depth		Performance Capability (TKPH)				Tube	
							Overall Width		Overall Diameter		Static Load Radius				T1	T2A	T2	T3	T1	T2
					in	mm	in	mm	in	mm	in	mm	in	mm	32nds	mm				
16.00R25	T85185	★★★RF	E-4	11.25/2.0			17.0	432	60.9	1548	27.7	704	54.2	43.0	116	143	160	177		TT

Rigid Dump Truck

10KM/H (5MPH)	KPa/PSI	900/131																		
	KG/LBS	14000***/30870***RF																		
50KM/H (30MPH)	KPa/PSI	800/116																		
	KG/LBS	8190***/18060***RF																		

Size	Pattern	Star Rating	Ind Code	Rim Width & Flange	Min. Dual Spacing		Approximate Inflated Dimensions				Loaded Dimensions		Tread Depth		Performance Capability (TKPH)				Tube	
							Overall Width		Overall Diameter		Static Load Radius				T1	T2A	T2	T3	T1	T2
					in	mm	in	mm	in	mm	in	mm	in	mm	32nds	mm				
16.00R25	TLS99A	★★★RF	E-3	11.25/2.0			17	432	59.0	1493	27.0	685	39.1	31.0			165	185		TT/TL

Rigid Dump Truck

10KM/H (5MPH)	KPa/PSI	900/131																		
	KG/LBS	14000***/30870***RF																		
50KM/H (30MPH)	KPa/PSI	800/116																		
	KG/LBS	8190***/18060***RF																		

Size	Pattern	Star Rating	Ind Code	Rim Width & Flange	Min. Dual Spacing		Approximate Inflated Dimensions				Loaded Dimensions		Tread Depth		Performance Capability (TKPH)				Tube	
							Overall Width		Overall Diameter		Static Load Radius				T1	T2A	T2	T3	T1	T2
					in	mm	in	mm	in	mm	in	mm	in	mm	32nds	mm				
16.00R25	TSM5	★★ ★★★	L-4S	11.25/2.0			17.0	432	61.0	1548	26.0	661	64.3	51.0						TL

Underground Mining

10KM/H (5MPH)	KPa/PSI	575/83	600/87	625/91	650/94	675/98	700/102	725/105	750/109	775/112	800/116	825/120								
	KG/LBS	9250/20400	9750/21500	10000/22000	10300/22700	10600/23400	10900/24000	11200/24700	11500/25400	11800/26000	12150/26800	12150***/26800***								
10KM/H (5MPH)	KPa/PSI	850/123	875/127	900/131																
	KG/LBS	12450/27400	12850/28300	13250***/29200***																

Size	Pattern	Star Rating	Jgd Code	Rim Width & Flange	Min. Dual Spacing		Approximate Inflated Dimensions				Loaded Dimensions		Tread Depth		Performance Capability (TKPH)				Tube	
					in	mm	in	mm	in	mm	in	mm	in	mm	32nds	mm	T1	T2A	T2	T3
16.00R25	TL535	***	IND-4 E-4	11.25/2.0	20.2	513	17.0	432	67.0	1548			64.3	51.0	70		80	115		TL

Industrial and Port

10KM/H (5MPH)	KPa/PSI	1000/145																		
	KG/LBS	18200**/40120**																		
25KM/H (15MPH)	KPa/PSI	1000/145																		
	KG/LBS	18200**/40990**																		

Underground Mining

10KM/H (5MPH)	KPa/PSI	900/131																		
	KG/LBS	13200**/29100**																		

Size	Pattern	Star Rating	Jgd Code	Rim Width & Flange	Min. Dual Spacing		Approximate Inflated Dimensions				Loaded Dimensions		Tread Depth		Performance Capability (TKPH)				Tube	
					in	mm	in	mm	in	mm	in	mm	in	mm	32nds	mm	T1	T2A	T2	T3
445/95R25 177 ROAD16.00R25	TR586	***	E-2	11.25/2.0	20.2	513	17.0	432	58.8	1493	27.1	688	30.2	24.0	165		210	255		TL

Mobile Crane

70KM/H (43MPH)	KPa/PSI	725/105	750/109	775/112	800/116	825/120	850/123	875/127	900/131											
	KG/LBS	6130/13600	6300/13900	6500/14300	6700/14800	6900/15200	6900/15200	7100/15700	7300**/16100**											

Size	Pattern	Star Rating	Jgd Code	Rim Width & Flange	Min. Dual Spacing		Approximate Inflated Dimensions				Loaded Dimensions		Tread Depth		Performance Capability (TKPH)				Tube	
					in	mm	in	mm	in	mm	in	mm	in	mm	32nds	mm	T1	T2A	T2	T3
445/95R25 174F ROAD16.00R25	TR586	***	E-2	11.25/2.0	20.2	513	17.0	432	58.8	1493			30.2	24.0	165		210	255		TL

Mobile Crane

80KM/H (50MPH)	KPa/PSI	725/105	750/109	775/112	800/116	825/120	850/123	875/127	900/131											
	KG/LBS	5600/12300	5800/12800	6000/13200	6150/13600	6300/13900	6500/14300	6500/14300	6700**/14730**											

Size	Pattern	Star Rating	Jgd Code	Rim Width & Flange	Min. Dual Spacing		Approximate Inflated Dimensions				Loaded Dimensions		Tread Depth		Performance Capability (TKPH)				Tube	
					in	mm	in	mm	in	mm	in	mm	in	mm	32nds	mm	T1	T2A	T2	T3
445/95R25 174F ROAD16.00R25	TR576		E-2	11.25/2.0	20.2	513	17	432	58.8	1493			31.5	25.0						TL

Mobile Crane

80KM/H (50MPH)	KPa/PSI	725/105	750/109	775/112	800/116	825/120	850/123	875/127	900/131											
	KG/LBS	5600/12300	5800/12800	6000/13200	6150/13600	6300/13900	6500/14300	6500/14300	6700**/14800**											

Size	Pattern	Star Rating	Ind Code	Rim Width & Flange	Min. Dual Spacing	Approximate Inflated Dimensions				Loaded Dimensions		Tread Depth		Performance Capability (TKPH)				Tube	
						Overall Width		Overall Diameter		Static Load Radius		32nds	mm	T1	T2A	T2	T3	T7	TL
						in	mm	in	mm	in	mm								
17.5R25	T85K6	★	L-2	14.00/1.3		17.5	445	53.1	1348			35.3	280					TL	
		★★																	
		★								G-2	24.3			616					

Loader and Bulldozer

10KM/H (5MPH)	KPa/PSI	400/58	425/62	450/65	475/69	500/73	525/76	550/80	575/83	600/87	625/91	650/94
	KG/LBS	6000/13200	6150/13600	6500/14300	6700/14800	7100*/15700*	7300/16100	7500/16500	7750/17100	8000/17600	8250/18200	8500**/18700**

Grader

40KM/H (25MPH)	KPa/PSI	125/18	150/22	175/25	200/29	225/33	250/36	275/40	300/44			
	KG/LBS	1850/4080	2120/4680	2360/5200	2650/5840	2900/6400	3075/6800	3350/7400	3650*/8050*			

Size	Pattern	Star Rating	Ind Code	Rim Width & Flange	Min. Dual Spacing	Approximate Inflated Dimensions				Loaded Dimensions		Tread Depth		Performance Capability (TKPH)				Tube	
						Overall Width		Overall Diameter		Static Load Radius		32nds	mm	T1	T2A	T2	T3	T7	TL
						in	mm	in	mm	in	mm								
17.5R25	T85K5	★	L-2	14.00/1.3		17.5	445	53.1	1348	216	599	35.3	280					TL	
		★★																	
		★								G-2	24.3			606					

Loader and Bulldozer

10KM/H (5MPH)	KPa/PSI	400/58	425/62	450/65	475/69	500/73	525/76	550/80	575/83	600/87		
	KG/LBS	6000/13200	6150/13600	6500/14300	6700/14800	7100*/15700*	7300/16100	7500/16500	7750/17100	8000/17600		

10KM/H (5MPH)	KPa/PSI	625/91	650/94									
	KG/LBS	8250/18200	8500**/18700**									

Grader

40KM/H (25MPH)	KPa/PSI	125/18	150/22	175/25	200/29	225/33	250/36	275/40	300/44			
	KG/LBS	1850/4080	2120/4680	2360/5200	2650/5840	2900/6400	3075/6800	3350/7400	3650*/8050*			

Size	Pattern	Star Rating	Ind Code	Rim Width & Flange	Min. Dual Spacing	Approximate Inflated Dimensions				Loaded Dimensions		Tread Depth		Performance Capability (TKPH)				Tube	
						Overall Width		Overall Diameter		Static Load Radius		32nds	mm	T1	T2A	T2	T3	T7	TL
						in	mm	in	mm	in	mm								
17.5R25	T85L5	★	L-2	14.00/1.3		17.5	445	53.1	1348			34.0	270					TL	
		★★																	
		★								G-2	24.0			618					

Loader and Bulldozer

10KM/H (5MPH)	KPa/PSI	400/58	425/62	450/65	475/69	500/73	525/76	550/80	575/83	600/87	625/91	650/94
	KG/LBS	6000/13200	6150/13600	6500/14300	6700/14800	7100*/15700*	7300/16100	7500/16500	7750/17100	8000/17600	8250/18200	8500**/18700**

Grader

40KM/H (25MPH)	KPa/PSI	125/18	150/22	175/25	200/29	225/33	250/36	275/40	300/44			
	KG/LBS	1850/4080	2120/4680	2360/5200	2650/5840	2900/6400	3075/6800	3350/7400	3650*/8050*			

Size	Pattern	Star Rating	Ind Code	Rim Width & Flange	Min. Dual Spacing		Approximate Inflated Dimensions				Loaded Dimensions Static Load Radius		Tread Depth		Performance Capability (TKPH)				Tube			
					in	mm	in	mm	in	mm	in	mm	in	mm	32nds	mm	T1	T2A	T2	T3	T1	T2
17.5R25	TBS16	★	L-3	1400/1.5			17.5	445	53.1	1348			34.0	27.0								
		★★																				
		★★★																		110	140	170

Loader and Bulldozer

10KM/H (5MPH)	KPa/PSI	400/58	425/62	450/65	475/69	500/73	525/76	650/80	575/83	600/87	625/91	650/94
	KG/LBS	6000/13200	6150/13600	6500/14300	6790/14800	7100*/15700*	7300/16100	7500/16500	7750/17100	8000/17600	8250/18200	8500**/18700**

Articulated Dump Truck

50KM/H (30MPH)	KPa/PSI	400/58	425/62	450/65	475/69	500/73	525/76					
	KG/LBS	4375/9650	4625/10200	4750/10500	5000/11000	5150/11400	5450**/12000**					

Size	Pattern	Star Rating	Ind Code	Rim Width & Flange	Min. Dual Spacing		Approximate Inflated Dimensions				Loaded Dimensions Static Load Radius		Tread Depth		Performance Capability (TKPH)				Tube							
					in	mm	in	mm	in	mm	in	mm	in	mm	32nds	mm	T1	T2A	T2	T3	T1	T2				
17.5R25	TSM5+	★★	L-55	1400/1.5			17.5	445	55.3	1399			25.0	63.8	79.4	63.0										
		★★★																								

Underground Mining

10KM/H (5MPH)	KPa/PSI	525/76	550/80	575/83	600/87	625/91	650/94	800/116				
	KG/LBS	7300/16100	7500/16500	7750/17100	8000/17600	8250/18200	8500**/18700**	10000***/22000***				

Size	Pattern	Star Rating	Ind Code	Rim Width & Flange	Min. Dual Spacing		Approximate Inflated Dimensions				Loaded Dimensions Static Load Radius		Tread Depth		Performance Capability (TKPH)				Tube											
					in	mm	in	mm	in	mm	in	mm	in	mm	32nds	mm	T1	T2A	T2	T3	T1	T2								
18.00R25	TBS185	★★	E-4	1300/2.5	23.1	587	19.6	498	65.9	1673	29.4	74.6	58.7	45.0																
		★★★																												

Rigid Dump Truck

10KM/H (5MPH)	KPa/PSI	575/83	600/87	625/91	650/94	675/98	700/102	725/105	750/109	775/112	800/116	825/120
	KG/LBS	12150/26800	12500/27600	12850/28300	13200/29100	13600/30000	14000/30900	14500/32000	15000/33100	15500/34200	16000**/35300**	
10KM/H (5MPH)	KPa/PSI	850/123	875/127	900/131								
	KG/LBS	16310/36000	16750/36900	17100**/37700**								
50KM/H (30MPH)	KPa/PSI	500/73	525/76	550/80	575/83	600/87	625/91	650/94	675/98	700/102		
	KG/LBS	7100/16100	7500/16500	7750/17100	8000/17600	8250/18200	8500/18700	8750/19300	9000/19800	9250**/20400**		

Size	Pattern	Star Rating	Ind Code	Rim Width & Flange	Min. Dual Spacing		Approximate Inflated Dimensions				Loaded Dimensions Static Load Radius		Tread Depth		Performance Capability (TKPH)				Tube										
					in	mm	in	mm	in	mm	in	mm	in	mm	32nds	mm	T1	T2A	T2	T3	T1	T2							
18.00R25	TSM5+	★★	L-55	1300/2.5	23.1	587	19.6	498.0	65.9	1673.0			100.8	80.0															
		★★★																											

Underground Mining

10KM/H (5MPH)	KPa/PSI	575/83	600/87	625/91	650/94	675/98	700/102	725/105	750/109	775/112	800/116	825/120
	KG/LBS	12150/26800	12500/27600	12850/28300	13200/29100	13600/30000	14000/30900	14500/32000	15000/33100	15500/34200	16000**/35300**	
10KM/H (5MPH)	KPa/PSI	850/123	875/127	900/131								
	KG/LBS	16310/36000	16750/36900	17100**/37700**								

Size	Pattern	Star Rating	Ind Code	Rim Width & Flange	Min. Dual Spacing	Approximate Inflated Dimensions				Loaded Dimensions		Tread Depth		Performance Capability (TKPH)				Tube	
						Overall Width		Overall Diameter		Static Load Radius		32nds	mm	T1	T2A	T2	T3	T1	T2
in	mm	in	mm	in	mm	in	mm	in	mm	in	mm								
18.0R25	TL58S	★★★	ND-4 E-4	11.00/2.5	23.1	587	19.6	498	65.9	1673			68.0	54.0	85		105	130	TL

Industrial and Port

10KM/H (5MPH)	KPa/PSI	1000/145																
	KG/LBS	22100***/48700***																
25KM/H (13MPH)	KPa/PSI	1000/145																
	KG/LBS	17000***/37500***																

Underground Mining

10KM/H (5MPH)	KPa/PSI	900/131																
	KG/LBS	17000***/37500***																

Size	Pattern	Star Rating	Ind Code	Rim Width & Flange	Min. Dual Spacing	Approximate Inflated Dimensions				Loaded Dimensions		Tread Depth		Performance Capability (TKPH)				Tube	
						Overall Width		Overall Diameter		Static Load Radius		32nds	mm	T1	T2A	T2	T3	T1	T2
in	mm	in	mm	in	mm	in	mm	in	mm	in	mm								
50S/55R25 386E R0AO(18.0R25)	T858	★★★	E-2	11.00/2.5	23.1	587	19.6	498	63.7	1617			26.5	21.0	200		240	300	TL

Mobile Crane

70KM/H (33MPH)	KPa/PSI	725/105	750/109	775/112	800/116	825/120	850/123	875/127	900/131										
	KG/LBS	8000/17600	8250/18200	8500/18700	8750/19300	9000/19800	9250/20400	9500/20900	9750/21400	10000/22000									

Size	Pattern	Star Rating	Ind Code	Rim Width & Flange	Min. Dual Spacing	Approximate Inflated Dimensions				Loaded Dimensions		Tread Depth		Performance Capability (TKPH)				Tube	
						Overall Width		Overall Diameter		Static Load Radius		32nds	mm	T1	T2A	T2	T3	T1	T2
in	mm	in	mm	in	mm	in	mm	in	mm	in	mm								
20.5R25	T856	★ ★★ ★	L-2 G-2	17.00/2.0			20.5	521	58.8	1493	25.9	658	39.1	31.0					TL

Loader and Bulldozer

10KM/H (5MPH)	KPa/PSI	400/58	425/62	450/65	475/69	500/73	525/76	550/80	575/83	600/87	625/91	650/94						
	KG/LBS	8000/17600	8250/18200	8500/18700	8750/19300	9000/19800	9250/20400	9500/20900	9750/21400	10000/22000	10250/22600	10500/23100	10750/23600	11000/24100	11250/24600	11500/25100	11750/25600	12000/26100

Grader

40KM/H (25MPH)	KPa/PSI	125/18	150/22	175/25	200/29	225/33	250/36	275/40	300/44									
	KG/LBS	2430/5360	2800/6150	3150/6950	3450/7600	3825/8550	4125/9100	4375/9650	4625/10200									

Size	Pattern	Star Rating	Ind Code	Rim Width & Flange	Min. Dual Spacing	Approximate Inflated Dimensions				Loaded Dimensions		Tread Depth		Performance Capability (TKPH)				Tube	
						Overall Width		Overall Diameter		Static Load Radius		32nds	mm	T1	T2A	T2	T3	T1	T2
in	mm	in	mm	in	mm	in	mm	in	mm	in	mm								
20.5R25	T856	★ ★★ ★	L-2 G-2	17.00/2.0			20.5	521	58.8	1493			39.1	31.0					TL

Loader and Bulldozer

10KM/H (5MPH)	KPa/PSI	400/58	425/62	450/65	475/69	500/73	525/76	550/80	575/83	600/87	625/91	650/94						
	KG/LBS	8000/17600	8250/18200	8500/18700	8750/19300	9000/19800	9250/20400	9500/20900	9750/21400	10000/22000	10250/22600	10500/23100	10750/23600	11000/24100	11250/24600	11500/25100	11750/25600	12000/26100

Grader

40KM/H (25MPH)	KPa/PSI	125/18	150/22	175/25	200/29	225/33	250/36	275/40	300/44									
	KG/LBS	2430/5360	2800/6150	3150/6950	3450/7600	3825/8550	4125/9100	4375/9650	4625/10200									

Size	Pattern	Star Rating	Ind Code	Rim Width & Flange	Min. Dual Spacing		Approximate Inflated Dimensions				Loaded Dimensions		Tread Depth		Performance Capability (TKPH)				Tube	
					in	mm	Overall Width		Overall Diameter		Static Load Radius		22nds	mm	T1	T2A	T2	T3	T1	T1
							in	mm	in	mm	in	mm								
20.5R25	TBS15	★	L-3	17.00/2.0			20.5	521	58.8	1493			17.8	30.0						TL
		★★																		
		★																		

Loader and Bulldozer

10KM/H (5MPH)	KPa/PSI	400/58	425/62	450/65	475/69	500/73	525/76	550/80	575/83	600/87	625/91	650/94
	KG/LBS	8000/17600	8250/18200	8750/19300	9000/19800	9500*/20900*	9750/21500	10000/22000	10300/22700	10900/24000	11200/24700	11500**/25400**

Grader

40KM/H (25MPH)	KPa/PSI	125/18	150/22	175/25	200/29	225/33	250/36	275/40	300/44			
	KG/LBS	2430/5360	2800/6150	3150/6950	3450/7600	3875/8550	4125/9100	4375/9650	4625/10200			

Size	Pattern	Star Rating	Ind Code	Rim Width & Flange	Min. Dual Spacing		Approximate Inflated Dimensions				Loaded Dimensions		Tread Depth		Performance Capability (TKPH)				Tube		
					in	mm	Overall Width		Overall Diameter		Static Load Radius		22nds	mm	T1	T2A	T2	T3	T1	T1	
							in	mm	in	mm	in	mm									
20.5R25	TBS16	★	L-3	17.00/2.0			20.5	521	58.8	1483			17.8	30.0						TL	
		★★																			
		★★★																			
		★★★PF																			

Loader and Bulldozer

10KM/H (5MPH)	KPa/PSI	400/58	425/62	450/65	475/69	500/73	525/76	550/80	575/83	600/87	625/91	650/94
	KG/LBS	8000/17600	8250/18200	8750/19300	9000/19800	9500*/20900*	9750/21500	10000/22000	10300/22700	10900/24000	11200/24700	11500**/25400**

Articulated Dump Truck

50KM/H (30MPH)	KPa/PSI	400/58	425/62	450/65	475/69	500/73	525/76					
	KG/LBS	5800/12800	6150/13600	6500/14300	6700/14800	6900/15200	7300**/16100**					

Industrial and Port

10KM/H (5MPH)	KPa/PSI	800/116										
	KG/LBS	11100**/26800**										

Size	Pattern	Star Rating	Ind Code	Rim Width & Flange	Min. Dual Spacing		Approximate Inflated Dimensions				Loaded Dimensions		Tread Depth		Performance Capability (TKPH)				Tube	
					in	mm	Overall Width		Overall Diameter		Static Load Radius		22nds	mm	T1	T2A	T2	T3	T1	T1
							in	mm	in	mm	in	mm								
20.5R25	TL3385-	★	L-5	17.00/2.0			20.5	521	61.0	1548			88.2	70.0						TL
		★★																		

Loader and Bulldozer

10KM/H (5MPH)	KPa/PSI	400/58	425/62	450/65	475/69	500/73	525/76	550/80	575/83	600/87	625/91	650/94
	KG/LBS	8000/17600	8250/18200	8750/19300	9000/19800	9500*/20900*	9750/21500	10000/22000	10300/22700	10900/24000	11200/24700	11500**/25400**

Size	Pattern	Star Rating	Jcd Code	Rim Width & Flange	Min Dual Spacing	Approximate Inflated Dimensions				Loaded Dimensions		Tread Depth		Performance Capability (TKPH)				Tube	
						Overall Width		Overall Diameter		Static Load Radius		32nds	mm	T1	T2A	T2	T3	T1	T2
						in	mm	in	mm	in	mm	in	mm						
20.5R25	TL595+	★★★	L-5	17.00/2.0		20.5	521	61	1548			93.2	74.0					TL	

Loader and Bulldozer

10KM/H (5MPH)	KPa/PSI	400/58	425/62	450/65	475/69	500/73	525/76	550/80	575/83	600/87	625/91	650/94	600/118
	KG/LBS	8000/17600	8250/18200	8750/19300	9000/19800	9500/20900*	9750/21500	10000/22000	10300/22700	10600/24000	11200/24700	11500**/25400**	13200***/29100***

Underground

10KM/H (5MPH)	KPa/PSI	525/76	550/80	575/83	600/87	625/91	650/94	675/98	700/102				
	KG/LBS	9750/21500	10000/22000	10300/22700	10600/24000	11200/24700	11500**/25400**	13200***/29100***					

Size	Pattern	Star Rating	Jcd Code	Rim Width & Flange	Min Dual Spacing	Approximate Inflated Dimensions				Loaded Dimensions		Tread Depth		Performance Capability (TKPH)				Tube	
						Overall Width		Overall Diameter		Static Load Radius		32nds	mm	T1	T2A	T2	T3	T1	T2
						in	mm	in	mm	in	mm	in	mm						
525/80R25 17R ROAD/20.5R25	T8576		E-2	17.00/2.0		20.9	530	58.1	1475			35.3	28.0					TL	

Mobile Crane

60KM/H (35MPH)	KPa/PSI	525/76	550/80	575/83	600/87	625/91	650/94	675/98	700/102				
	KG/LBS	8000/17600	8000/17600	8000/17600	8300/18300	8500/18700	8700/19100	8900/19500	9100/19900				

Size	Pattern	Star Rating	Jcd Code	Rim Width & Flange	Min Dual Spacing	Approximate Inflated Dimensions				Loaded Dimensions		Tread Depth		Performance Capability (TKPH)				Tube	
						Overall Width		Overall Diameter		Static Load Radius		32nds	mm	T1	T2A	T2	T3	T1	T2
						in	mm	in	mm	in	mm	in	mm						
21.5R25	TMS18	★★★	E-2	19.50/2.5		23.5	597	63.7	1617			37.8	30.0					TL	

Loader and Bulldozer

10KM/H (5MPH)	KPa/PSI	400/58	425/62	450/65	475/69	500/73	525/76	550/80	575/83	600/87	625/91	650/94
	KG/LBS	10300/22700	10600/23400	11200/24700	11500/25400	12150**/26800**	12500/27100	12850/28300	13200/29100	13600/30000	14000/30900	14500**/32000**

Articulated Dump Truck

50KM/H (30MPH)	KPa/PSI	400/58	425/62	450/65	475/69	500/73	525/76					
	KG/LBS	7500/16500	7750/17100	8250/18200	8500/18700	9000/19800	9250**/20400**					

Size	Pattern	Star Rating	Ind Code	Rim Width & Flange	Min. Dual Spacing		Approximate Inflated Dimensions				Loaded Dimensions		Tread Depth		Performance Capability (TKPH)				Tube		
					in	mm	Overall Width		Overall Diameter		Static Load Radius		32nds	mm	T1	T2A	T2	T3	T1	T1	
							in	mm	in	mm	in	mm									
21.5R25	T896	★	I-2	19.5/2.5			21.5	597	63.7	1617			42.8	340						TL	
		★★																			
		★★★																			
		★★★★																			

Loader and Bulldozer

10KM/H (5MPH)	KPa/PSI	400/58	425/62	450/65	475/69	500/73	525/76	550/80	575/83	600/87	625/91	650/94
	KG/LBS	10300/22700	10600/23400	11200/24700	11500/25400	12150*/26800*	12500/27600	12850/28300	13200/29100	13600/30000	14000/30900	14500**/32000**

Grader

40KM/H (25MPH)	KPa/PSI	125/18	150/22	175/25	200/29	225/33	250/36	275/40	300/44			
	KG/LBS	3150/6950	3550/7850	4000/8800	4500/9900	4875/10700	5300/11700	5600/12300	6000*/13200*			

Articulated Dump Truck

50KM/H (30MPH)	KPa/PSI	400/58	425/62	450/65	475/69	500/73	525/76					
	KG/LBS	7500/16500	7750/17100	8250/18200	8500/18700	9000/19800	9250**/20400**					

Size	Pattern	Star Rating	Ind Code	Rim Width & Flange	Min. Dual Spacing		Approximate Inflated Dimensions				Loaded Dimensions		Tread Depth		Performance Capability (TKPH)				Tube		
					in	mm	Overall Width		Overall Diameter		Static Load Radius		32nds	mm	T1	T2A	T2	T3	T1	T1	
							in	mm	in	mm	in	mm									
21.5R25	T8516	★	I-3	19.5/2.5			21.5	597	63.7	1617			40.3	32.0						TL	
		★★																			
		★★★																			
		★★★★																			

Loader and Bulldozer

10KM/H (5MPH)	KPa/PSI	400/58	425/62	450/65	475/69	500/73	525/76	550/80	575/83	600/87	625/91	650/94
	KG/LBS	10300/22700	10600/23400	11200/24700	11500/25400	12150*/26800*	12500/27600	12850/28300	13200/29100	13600/30000	14000/30900	14500**/32000**

Articulated Dump Truck

50KM/H (30MPH)	KPa/PSI	400/58	425/62	450/65	475/69	500/73	525/76					
	KG/LBS	7500/16500	7750/17100	8250/18200	8500/18700	9000/19800	9250**/20400**					

Industrial and Port

10KM/H (5MPH)	KPa/PSI	800/116										
	KG/LBS	16100**/35500**WF										

Size	Pattern	Star Rating	Ind Code	Rim Width & Flange	Min. Dual Spacing		Approximate Inflated Dimensions				Loaded Dimensions		Tread Depth		Performance Capability (TKPH)				Tube		
					in	mm	Overall Width		Overall Diameter		Static Load Radius		32nds	mm	T1	T2A	T2	T3	T1	T1	
							in	mm	in	mm	in	mm									
21.5R25	T1528	★	I-3	19.5/2.5			21.5	597	63.7	1617			50.4	400						TL	
		★★																			
		★★★																			
		★★★★																			

Loader and Bulldozer

10KM/H (5MPH)	KPa/PSI	400/58	425/62	450/65	475/69	500/73	525/76	550/80	575/83	600/87	625/91	650/94
	KG/LBS	10300/22700	10600/23400	11200/24700	11500/25400	12150*/26800*	12500/27600	12850/28300	13200/29100	13600/30000	14000/30900	14500**/32000**

Articulated Dump Truck

50KM/H (30MPH)	KPa/PSI	400/58	425/62	450/65	475/69	500/73	525/76					
	KG/LBS	7500/16500	7750/17100	8250/18200	8500/18700	9000/19800	9250**/20400**					

Size	Pattern	Star Rating	Ind Code	Rim Width & Flange	Min Dual Spacing	Approximate Inflated Dimensions				Loaded Dimensions		Tread Depth		Performance Capability (TKPH)				Tube	
						Overall Width		Overall Diameter		Static Load Radius		32nds	mm	T1	T2A	T2	T3	T1	T2
						in	mm	in	mm	in	mm	in	mm						
23.5R25	T859	★★	L-3 E-3L-3	19.50/2.5		23.5	597	63.7	1617			44.1	35.0					TL	

Loader and Bulldozer

10KM/H (5MPH)	KPa/PSI	400/58	425/62	450/65	475/69	500/73	525/76	550/80	575/83	600/87	625/91	650/94
	KG/LBS	10300/22700	10600/23400	11200/24700	11500/25400	12150*/26800*	12500/27600	12850/28300	13200/29100	13600/30000	14000/30900	14500**/32000**

Articulated Dump Truck

50KM/H (30MPH)	KPa/PSI	400/58	425/62	450/65	475/69	500/73	525/76					
	KG/LBS	7500/16500	7750/17100	8250/18200	8500/18700	9000/19800	9250**/20400**					

Size	Pattern	Star Rating	Ind Code	Rim Width & Flange	Min Dual Spacing	Approximate Inflated Dimensions				Loaded Dimensions		Tread Depth		Performance Capability (TKPH)				Tube	
						Overall Width		Overall Diameter		Static Load Radius		32nds	mm	T1	T2A	T2	T3	T1	T2
						in	mm	in	mm	in	mm	in	mm						
23.5R25	T859S	★★	L-4 E-4	19.50/2.5		23.5	597	65.9	1673	28.1	714	59.2	47.0					TL	

Loader and Bulldozer

10KM/H (5MPH)	KPa/PSI	400/58	425/62	450/65	475/69	500/73	525/76	550/80	575/83	600/87	625/91	650/94
	KG/LBS	10300/22700	10600/23400	11200/24700	11500/25400	12150*/26800*	12500/27600	12850/28300	13200/29100	13600/30000	14000/30900	14500**/32000**

Articulated Dump Truck

50KM/H (30MPH)	KPa/PSI	400/58	425/62	450/65	475/69	500/73	525/76					
	KG/LBS	7500/16500	7750/17100	8250/18200	8500/18700	9000/19800	9250**/20400**					

Size	Pattern	Star Rating	Ind Code	Rim Width & Flange	Min Dual Spacing	Approximate Inflated Dimensions				Loaded Dimensions		Tread Depth		Performance Capability (TKPH)				Tube	
						Overall Width		Overall Diameter		Static Load Radius		32nds	mm	T1	T2A	T2	T3	T1	T2
						in	mm	in	mm	in	mm	in	mm						
23.5R25	TL538S+	★★	L-5	19.50/2.5		23.5	597	65.9	1673	28.8	732	67.0	77.0					TL	

Loader and Bulldozer

10KM/H (5MPH)	KPa/PSI	400/58	425/62	450/65	475/69	500/73	525/76	550/80	575/83	600/87	625/91	650/94
	KG/LBS	10300/22700	10600/23400	11200/24700	11500/25400	12150*/26800*	12500/27600	12850/28300	13200/29100	13600/30000	14000/30900	14500**/32000**

Size	Pattern	Star Rating	Ind Code	Rim Width & Flange	Min Dual Spacing	Approximate Inflated Dimensions				Loaded Dimensions		Tread Depth		Performance Capability (TKPH)				Tube	
						Overall Width		Overall Diameter		Static Load Radius		32nds	mm	T1	T2A	T2	T3	T1	T2
						in	mm	in	mm	in	mm	in	mm						
23.5R25	TL539S+	★★★	L-5	19.50/2.5		23.5	597	65.9	1673	29.3	745	69.3	82.0					TL	

Loader and Bulldozer

10KM/H (5MPH)	KPa/PSI	400/58	425/62	450/65	475/69	500/73	525/76	550/80	575/83	600/87	625/91	650/94
	KG/LBS	10300/22700	10600/23400	11200/24700	11500/25400	12150*/26800*	12500/27600	12850/28300	13200/29100	13600/30000	14000/30900	14500**/32000**

Underground Mining

10KM/H (5MPH)	KPa/PSI	525/76	550/80	575/83	600/87	625/91	650/94	800/116				
	KG/LBS	12500/27600	12850/28300	13200/29100	13600/30000	14000/30900	14500**/32000**	17000**/37500**				

Size	Pattern	Star Rating	Ind Code	Rim Width & Flange	Min. Dual Spacing		Approximate Inflated Dimensions				Loaded Dimensions		Tread Depth		Performance Capability (TKPH)				Tube	
					in	mm	Overall Width		Overall Diameter		Static Load Radius		32nds	mm	T1	T2A	T2	T3	T1	TL
							in	mm	in	mm	in	mm								
26.5R25	T8510	★	L-3	22.00/3.0			26.5	673	68.9	1750	30.5	775	44.1	35.0						TL
		★★													165		225	280		
		★★★																		
		★★★★RF																		
		★★★★																		

Loader and Bulldozer

100KM/H (50MPH)	KPa/PSI	400/58	425/62	450/65	475/69	500/73	525/76	550/80	575/83	600/87	625/91	650/94
	KG/LBS	12850/28300	13300/29100	14000/30900	14500/32000	15000*33100*	15500/34200	16000/35300	16500/36400	17000/37500	18000/39700	18500**/40800**

Articulated Dump Truck

50KM/H (20MPH)	KPa/PSI	400/58	425/62	450/65	475/69	500/73	525/76					
	KG/LBS	9500/20900	9750/21500	10300/22700	10600/23400	11200/24700	11500**/25400**					

Industrial and Port

100KM/H (50MPH)	KPa/PSI	800/116		800/116								
	KG/LBS	19100**/42110**9F		21300**/46750**								

Size	Pattern	Star Rating	Ind Code	Rim Width & Flange	Min. Dual Spacing		Approximate Inflated Dimensions				Loaded Dimensions		Tread Depth		Performance Capability (TKPH)				Tube	
					in	mm	Overall Width		Overall Diameter		Static Load Radius		32nds	mm	T1	T2A	T2	T3	T1	TL
							in	mm	in	mm	in	mm								
26.5R25	T8598	★★	L/3 E-3A.3	22.00/3.0			26.5	673	68.9	1750			46.6	37.0						TL

Loader and Bulldozer

100KM/H (50MPH)	KPa/PSI	400/58	425/62	450/65	475/69	500/73	525/76	550/80	575/83	600/87	625/91	650/94
	KG/LBS	12850/28300	13300/29100	14000/30900	14500/32000	15000*33100*	15500/34200	16000/35300	16500/36400	17000/37500	18000/39700	18500**/40800**

Articulated Dump Truck

50KM/H (20MPH)	KPa/PSI	400/58	425/62	450/65	475/69	500/73	525/76					
	KG/LBS	9500/20900	9750/21500	10300/22700	10600/23400	11200/24700	11500**/25400**					

Size	Pattern	Star Rating	Ind Code	Rim Width & Flange	Min. Dual Spacing		Approximate Inflated Dimensions				Loaded Dimensions		Tread Depth		Performance Capability (TKPH)				Tube	
					in	mm	Overall Width		Overall Diameter		Static Load Radius		32nds	mm	T1	T2A	T2	T3	T1	TL
							in	mm	in	mm	in	mm								
26.5R25	T8595	★★★	L-4	22.00/3.0			26.5	673	70.8	1798			68.0	54.0						TL
		★★★★													165		195	240		
		★★	E-4															32.0	813	

Loader and Bulldozer

100KM/H (50MPH)	KPa/PSI	525/76	550/80	575/83	600/87	625/91	650/94	800/116				
	KG/LBS	15500/34200	16000/35300	16500/36400	17000/37500	18000/39700	18500**/40800**	21200**/46750**				

Articulated Dump Truck

50KM/H (20MPH)	KPa/PSI	400/58	425/62	450/65	475/69	500/73	525/76					
	KG/LBS	9500/20900	9750/21500	10300/22700	10600/23400	11200/24700	11500**/25400**					

Size	Pattern	Star Rating	Ind Code	Rim Width & Flange	Min. Dual Spacing	Approximate Inflated Dimensions				Loaded Dimensions		Tread Depth		Performance Capability (TKPH)				Tube	
						Overall Width		Overall Diameter		Static Load Radius		32nds	mm	T1	T2A	T2	T3	T1	T2
						in	mm	in	mm	in	mm								
26.5R25	TLS95+	★ ★★	L-5	22.00/3.0		26.5	673	70.8	1798	31.4	797	108.3	86.0						TL

Loader and Bulldozer

10KM/H (5MPH)	KPa/PSI	400/58	425/62	450/65	475/69	500/73	525/76	550/80	575/83	600/87	625/91	650/94
	KG/LBS	12850/28300	13200/29100	14000/30900	14500/32000	15000*/33100*	15500/34200	16000/35300	16500/36400	17000/37500	18000/39700	18500**/40800**

Size	Pattern	Star Rating	Ind Code	Rim Width & Flange	Min. Dual Spacing	Approximate Inflated Dimensions				Loaded Dimensions		Tread Depth		Performance Capability (TKPH)				Tube	
						Overall Width		Overall Diameter		Static Load Radius		32nds	mm	T1	T2A	T2	T3	T1	T2
						in	mm	in	mm	in	mm								
26.5R25	TLS95+	★★ ★★★★	L-5	22.00/3.0		26.5	673	70.8	1798	29.8	758	113.4	90.0						TL

Loader and Bulldozer

10KM/H (5MPH)	KPa/PSI	400/58	425/62	450/65	475/69	500/73	525/76	550/80	575/83	600/87	625/91	650/94
	KG/LBS	12850/28300	13200/29100	14000/30900	14500/32000	15000*/33100*	15500/34200	16000/35300	16500/36400	17000/37500	18000/39700	18500**/40800**

Underground Mining

10KM/H (5MPH)	KPa/PSI	525/76	550/80	575/83	600/87	625/91	650/94	800/116
	KG/LBS	15500/34200	16000/35300	16500/36400	17000/37500	18000/39700	18500**/40800**	21200***/46750***

Size	Pattern	Star Rating	Ind Code	Rim Width & Flange	Min. Dual Spacing	Approximate Inflated Dimensions				Loaded Dimensions		Tread Depth		Performance Capability (TKPH)				Tube	
						Overall Width		Overall Diameter		Static Load Radius		32nds	mm	T1	T2A	T2	T3	T1	T2
						in	mm	in	mm	in	mm								
26.5R25	TSM5+	★ ★★ ★★★★	L-5S	22.00/3.0		26.5	673	70.8	1798			118.4	94.0						TL

Underground Mining

10KM/H (5MPH)	KPa/PSI	400/58	425/62	450/65	475/69	500/73	525/76	550/80	575/83	600/87	625/91	650/94
	KG/LBS	12850/28300	13200/29100	14000/30900	14500/32000	15000*/33100*	15500/34200	16000/35300	16500/36400	17000/37500	18000/39700	18500**/40800**

Size	Pattern	Star Rating	Ind Code	Rim Width & Flange	Min. Dual Spacing	Approximate Inflated Dimensions				Loaded Dimensions		Tread Depth		Performance Capability (TKPH)				Tube		
						Overall Width		Overall Diameter		Static Load Radius		32nds	mm	T1	T2A	T2	T3	T1	T2	
						in	mm	in	mm	in	mm									
29.5R25	T8556	★ ★★ ★★★ ★★★★RF	L-3 E-3	25.00/3.5		29.5	749	73.8	1874	32.6	829	47.9	38.0	180	230	290				TL

Loader and Bulldozer

10KM/H (5MPH)	KPa/PSI	400/58	425/62	450/65	475/69	500/73	525/76	550/80	575/83	600/87	625/91	650/94
	KG/LBS	15500/34200	16000/35300	17000/37500	17500/38600	18000*/39700*	19000/41900	19500/43000	20000/44100	20600/45400	21200/46700	22400**/49400**

Articulated Dump Truck

50KM/H (30MPH)	KPa/PSI	400/58	425/62	450/65	475/69	500/73	525/76
	KG/LBS	11500/25400	11800/26000	12500/27600	12850/28300	13600/30000	14000**/30900**

Industrial and Pave

10KM/H (5MPH)	KPa/PSI	800/116
	KG/LBS	24650**/54200**RF

Size	Pattern	Star Rating	Ind Code	Rim Width & Flange	Min. Dual Spacing		Approximate Inflated Dimensions				Loaded Dimensions		Tread Depth		Performance Capability (TKPH)				Tube		
							Overall Width		Overall Diameter		Static Load Radius				T1	T2A	T2	T3	T1	T2	
					in	mm	in	mm	in	mm	in	mm	in	mm	32nds	mm					
29.5R25	T8590	★★	L-3 E-35-3	25.00/3.5			29.5	749	73.8	1874			53.7	41.0							TL

Loader and Bulldozer

10KM/H (5MPH)	KPa/PSI	400/58	425/62	450/65	475/69	500/73	525/76	550/80	575/83	600/87	625/91	650/94
	KG/LBS	15500/34200	16000/35100	17000/37500	17500/38600	18000*/39700*	19000/41900	19500/43000	20000/44100	20600/45400	21200/46700	22400**/49400**

Articulated Dump Truck

50KM/H (30MPH)	KPa/PSI	400/58	425/62	450/65	475/69	500/73	525/76					
	KG/LBS	11500/25400	11800/26000	12500/27600	12850/28300	13600/30000	14000**/30900**					

Size	Pattern	Star Rating	Ind Code	Rim Width & Flange	Min. Dual Spacing		Approximate Inflated Dimensions				Loaded Dimensions		Tread Depth		Performance Capability (TKPH)				Tube		
							Overall Width		Overall Diameter		Static Load Radius				T1	T2A	T2	T3	T1	T2	
					in	mm	in	mm	in	mm	in	mm	in	mm	32nds	mm					
29.5R25	T8595	★★	L-4 E-4	25.00/3.5			29.5	749	75.6	1923	33.7	856	73.8	57.0	195		285	290			TL

Loader and Bulldozer

10KM/H (5MPH)	KPa/PSI	400/58	425/62	450/65	475/69	500/73	525/76	550/80	575/83	600/87	625/91	650/94
	KG/LBS	15500/34200	16000/35100	17000/37500	17500/38600	18000*/39700*	19000/41900	19500/43000	20000/44100	20600/45400	21200/46700	22400**/49400**

Articulated Dump Truck

50KM/H (30MPH)	KPa/PSI	400/58	425/62	450/65	475/69	500/73	525/76					
	KG/LBS	11500/25400	11800/26000	12500/27600	12850/28300	13600/30000	14000**/30900**					

Size	Pattern	Star Rating	Ind Code	Rim Width & Flange	Min. Dual Spacing		Approximate Inflated Dimensions				Loaded Dimensions		Tread Depth		Performance Capability (TKPH)				Tube		
							Overall Width		Overall Diameter		Static Load Radius				T1	T2A	T2	T3	T1	T2	
					in	mm	in	mm	in	mm	in	mm	in	mm	32nds	mm					
29.5R25	TL5385+	★ ★★	L-5	25.00/3.5			29.5	749	75.6	1923	33.8	807	118.4	94.0							TL

Loader and Bulldozer

10KM/H (5MPH)	KPa/PSI	400/58	425/62	450/65	475/69	500/73	525/76	550/80	575/83	600/87	625/91	650/94
	KG/LBS	15500/34200	16000/35100	17000/37500	17500/38600	18000*/39700*	19000/41900	19500/43000	20000/44100	20600/45400	21200/46700	22400**/49400**

Size	Pattern	Star Rating	Ind Code	Rim Width & Flange	Min. Dual Spacing		Approximate Inflated Dimensions				Loaded Dimensions		Tread Depth		Performance Capability (TKPH)				Tube		
							Overall Width		Overall Diameter		Static Load Radius				T1	T2A	T2	T3	T1	T2	
					in	mm	in	mm	in	mm	in	mm	in	mm	32nds	mm					
29.5R25	TL5595+	★★ ★★★	L-5	25.00/3.5			29.5	749	75.6	1923	33.8	807	134.7	99.0							TL

Loader and Bulldozer

10KM/H (5MPH)	KPa/PSI	525/76	550/80	575/83	600/87	625/91	650/94	800/116				
	KG/LBS	19000/41900	19500/43000	20000/44100	20600/45400	21200/46700	22400**/49400**	25730**/56800**				

Underground Mining

10KM/H (5MPH)	KPa/PSI	525/76	550/80	575/83	600/87	625/91	650/94	800/116				
	KG/LBS	19000/41900	19500/43000	20000/44100	20600/45400	21200/46700	22400**/49400**	25730**/56800**				

Size	Pattern	Star Rating	Ind Code	Rim Width & Flange	Min. Dual Spacing	Approximate Inflated Dimensions				Loaded Dimensions		Tread Depth		Performance Capability (TKPH)				Tube	
						Overall Width		Overall Diameter		Static Load Radius		32nds	mm	T1	T2A	T2	T3	T1	T2
						in	mm	in	mm	in	mm								
600R5R25	T8598	★★	L-3 E-3/L-3	19.50/2.5		23.9	608	55.7	1415	24.6	625	42.8	34.0						TL

Loader and Bulldozer

10KM/H (5MPH)	KPa/PSI	400/58	425/62	450/65	475/69	500/73	525/76	550/80	575/83	600/87	625/91		
	KG/LBS	8750/19300	9000/19800	9500/20900	9750*/21500*	10300/22700	10600/23400	10900/24000	11500/25400	11800/26000	12150**/26800**		

Articulated Dump Truck

50KM/H (30MPH)	KPa/PSI	425/62										
	KG/LBS	7500**/166800**										

Size	Pattern	Star Rating	Ind Code	Rim Width & Flange	Min. Dual Spacing	Approximate Inflated Dimensions				Loaded Dimensions		Tread Depth		Performance Capability (TKPH)				Tube	
						Overall Width		Overall Diameter		Static Load Radius		32nds	mm	T1	T2A	T2	T3	T1	T2
						in	mm	in	mm	in	mm								
850R5R25	T8598	★★	L-3 E-3/L-3	19.50/2.5		25.4	645	58.3	1481			47.9	38.0						TL

Loader and Bulldozer

10KM/H (5MPH)	KPa/PSI	400/58	425/62	450/65	475/69	500/73	525/76	550/80	575/83	600/87	625/91		
	KG/LBS	10000/22000	10600/23400	10900/24000	11500/25400	11800/26000	12500/27600	12850/28300	13200/29100	13600/30000	14000**/30900**		

Articulated Dump Truck

50KM/H (30MPH)	KPa/PSI	350/51	375/54	400/58	425/62							
	KG/LBS	6900/15200	7100/15700	7500/16500	8000**/17600**							

Size	Pattern	Star Rating	Ind Code	Rim Width & Flange	Min. Dual Spacing	Approximate Inflated Dimensions				Loaded Dimensions		Tread Depth		Performance Capability (TKPH)				Tube		
						Overall Width		Overall Diameter		Static Load Radius		32nds	mm	T1	T2A	T2	T3	T1	T2	
						in	mm	in	mm	in	mm									
750R5R25	T8598	★★	L-3 E-3	24.00/3.0		29.7	754	63.4	1611	27.3	680	52.9	42.0			130		190	248	TL

Loader and Bulldozer

10KM/H (5MPH)	KPa/PSI	580/73	525/76	550/80	575/83	600/87	625/91					
	KG/LBS	15500/34200	16000/35300	16500/36400	17000/37500	17500/38600	18500**/40800**					

Articulated Dump Truck

50KM/H (30MPH)	KPa/PSI	350/51	375/54	400/58	425/62							
	KG/LBS	8250/20400	8750/21500	10000/22700	10600**/23400**							

Size	Pattern	Star Rating	Ind Code	Rim Width & Flange	Min. Dual Spacing	Approximate Inflated Dimensions				Loaded Dimensions		Tread Depth		Performance Capability (TKPH)				Tube		
						Overall Width		Overall Diameter		Static Load Radius		32nds	mm	T1	T2A	T2	T3	T1	T2	
						in	mm	in	mm	in	mm									
750R5R25	T8598S	★★	E-4	24.00/3.0		29.7	754	65.6	1666			66.6	53							TL

Articulated Dump Truck

50KM/H (30MPH)	KPa/PSI	350/51	375/54	400/58	425/62							
	KG/LBS	8250/20400	8750/21500	10000/22700	10600**/23400**							

29"

Size	Pattern	Star Rating	Ind Code	Rim Width & Flange	Min. Dual Spacing		Approximate Inflated Dimensions				Loaded Dimensions		Tread Depth		Performance Capability (TKPH)				Tube		
					in	mm	Overall Width		Overall Diameter		Static Load Radius		22nds	mm	T1	T2A	T2	T3	T1	T2	
29.5R29	T8516	★	E-3	25.00/3.5				29.5	789	77.8	1975	34.5	876.0	47.9	38.0					TL	
		★★																			
		★★★														200		252	330		
		★★★RF																			

Lowliner and Bulldozer

10KM/H (5MPH)	KPa/PSI	400/58	425/62	450/65	475/69	500/73	525/76	550/80	575/83	600/87	625/91	650/94
	KG/LBS	10500/26400	17000/37500	18000/39700	18500/40800	19500*/43000*	20000/44100	20600/45400	21200/46700	22400/49400	23000/50700	23600**/52000**

Scraper

60KM/H (35MPH)	KPa/PSI	400/58	425/62	450/65	475/69	500/73	525/76					
	KG/LBS	12150/26800	12500/27600	13200/29100	13600/30000	14500/32000	15000**/33100**					

Industrial and Port

10KM/H (5MPH)	KPa/PSI	800/116										
	KG/LBS	20960*98/57100**98										

Size	Pattern	Star Rating	Ind Code	Rim Width & Flange	Min. Dual Spacing		Approximate Inflated Dimensions				Loaded Dimensions		Tread Depth		Performance Capability (TKPH)				Tube		
					in	mm	Overall Width		Overall Diameter		Static Load Radius		22nds	mm	T1	T2A	T2	T3	T1	T2	
29.5R29	TL5785	★★★★	E-4	25.00/3.5			30.4	771	78.1	1981			71.0	58.0							TL

Underground

10KM/H (5MPH)	KPa/PSI	800/116										
	KG/LBS	27250***/60070**										

Underground

40KM/H (25MPH)	KPa/PSI	800/116										
	KG/LBS	24500***/53580**										

Size	Pattern	Star Rating	Ind Code	Rim Width & Flange	Min. Dual Spacing		Approximate Inflated Dimensions				Loaded Dimensions		Tread Depth		Performance Capability (TKPH)				Tube		
					in	mm	Overall Width		Overall Diameter		Static Load Radius		22nds	mm	T1	T2A	T2	T3	T1	T2	
31.2R29	TL568+	★★	E-3	27.00/3.5			33.3	845	82.3	2090			55.4	44.0	310		390	490			TL

Scraper

60KM/H (35MPH)	KPa/PSI	400/58	425/62	450/65	475/69	500/73	525/76					
	KG/LBS	13000/31100	15500/34200	16500/36400	17000/37500	17500/38600	18500**/40800**					

Industrial and Port

60KM/H (35MPH)	KPa/PSI	400/58	425/62	450/65	475/69	500/73	525/76					
	KG/LBS	13000/31100	15500/34200	16500/36400	17000/37500	17500/38600	18500**/40800**					

Size	Pattern	Star Rating	Ind Code	Rim Width & Flange	Min. Dual Spacing		Approximate Inflated Dimensions				Loaded Dimensions		Tread Depth		Performance Capability (TKPH)				Tube		
							Overall Width		Overall Diameter		Static Load Radius				T1	T2A	T2	T3	T1	T2	
					in	mm	in	mm	in	mm	in	mm	in	mm	32nds	mm					TT
11.2R29	T8985	★★	E-4	27.00/3.5			83.3	845	82.1	2085			80.6	84.0							TL

Articulated Dump Truck

50KM/H (30MPH)	KPa/PSI	400/58	425/62	450/65	475/69	500/73	525/76				
	KG/LBS	15000/33100	15500/34200	16000/36400	17000/37500	17500/38600	18500**/40800**				

Size	Pattern	Star Rating	Ind Code	Rim Width & Flange	Min. Dual Spacing		Approximate Inflated Dimensions				Loaded Dimensions		Tread Depth		Performance Capability (TKPH)				Tube		
							Overall Width		Overall Diameter		Static Load Radius				T1	T2A	T2	T3	T1	T2	
					in	mm	in	mm	in	mm	in	mm	in	mm	32nds	mm					TT
7.75R29	T8999	★★	L-1 E-3	24.00/3.5			30.4	771	68.7	1745			55.4	44.0							TL

Loader and Bulldozer

10KM/H (5MPH)	KPa/PSI	600/73	525/76	550/80	575/83	600/87	625/91				
	KG/LBS	17500/38600	18500/40800	19000/41900	19500/43000	20000/44100	20600**/45400**				

Articulated Dump Truck

50KM/H (30MPH)	KPa/PSI	350/51	375/54	400/58	425/62				
	KG/LBS	10000/22000	11500/25400	12150/26800	12850**/28300**				

Size	Pattern	Star Rating	Ind Code	Rim Width & Flange	Min. Dual Spacing		Approximate Inflated Dimensions				Loaded Dimensions		Tread Depth		Performance Capability (TKPH)				Tube		
							Overall Width		Overall Diameter		Static Load Radius				T1	T2A	T2	T3	T1	T2	
					in	mm	in	mm	in	mm	in	mm	in	mm	32nds	mm					TT
8.75R29	T8998	★★	L-3 E-3	28.00/3.5			34.2	868	73.5	1968	32.5	825	63.0	50.0							TL

Loader and Bulldozer

10KM/H (5MPH)	KPa/PSI	400/58	425/62	450/65	475/69	500/73	525/76	550/80	575/83	600/87	625/91				
	KG/LBS	18500/40800	19500/43000	20600/45400	21200**/46700**	21800/48100	23000/50700	23600/52000	24300/53600	25000/55100	25750**/56800**				

Articulated Dump Truck

50KM/H (30MPH)	KPa/PSI	350/51	375/54	400/58	425/62				
	KG/LBS	13200/29100	14000/30900	14500/32000	15500**/34200**				

Size	Pattern	Star Rating	Ind Code	Rim Width & Flange	Min. Dual Spacing		Approximate Inflated Dimensions				Loaded Dimensions		Tread Depth		Performance Capability (TKPH)				Tube		
							Overall Width		Overall Diameter		Static Load Radius				T1	T2A	T2	T3	T1	T2	
					in	mm	in	mm	in	mm	in	mm	in	mm	32nds	mm					TT
8.75R29	T8985	★★	L-4 E-4	27.00/3.5			34.6	879	73.8	1875			73.6	59.0							TL

Loader and Bulldozer

10KM/H (5MPH)	KPa/PSI	400/58	425/62	450/65	475/69	500/73	525/76	550/80	575/83	600/87	625/91				
	KG/LBS	18500/40800	19500/43000	20600/45400	21200**/46700**	21800/48100	23000/50700	23600/52000	24300/53600	25000/55100	25750**/56800**				

Articulated Dump Truck

50KM/H (30MPH)	KPa/PSI	350/51	375/54	400/58	425/62				
	KG/LBS	13200/29100	14000/30900	14500/32000	15500**/34200**				

33"

Size	Pattern	Star Rating	Ind Code	Rim Width & Flange	Min. Dual Spacing		Approximate Inflated Dimensions				Loaded Dimensions		Tread Depth		Performance Capability (TKPH)				Tube		
					in	mm	in	mm	in	mm	in	mm	in	mm	in	mm	T1	T2A	T2	T3	T1
18.00R33	TBS265	★★	E-4	13.00/2.5	23.1	587	19.6	498	73.9	1877	34.7	882	64.3	53.0	160		180	270			TL

Rigid Dump Truck

50KM/H (30MPH)	KPa/PSI	500/73	525/76	550/80	575/83	600/87	625/91	650/94	675/98	700/102	
	KG/LBS	8500/18700	8750/19300	9000/19800	9250/20400	9750/21500	10000/22000	10300/22700	10600/23400	10900**/24000**	

Size	Pattern	Star Rating	Ind Code	Rim Width & Flange	Min. Dual Spacing		Approximate Inflated Dimensions				Loaded Dimensions		Tread Depth		Performance Capability (TKPH)				Tube		
					in	mm	in	mm	in	mm	in	mm	in	mm	T1	T2A	T2	T3	T1	T2	
18.00R33	TBS265	★★	E-4	13.00/2.5	23.1	587	19.6	498	73.9	1877	34.1	865	66.8	53.0							TL

Rigid Dump Truck

50KM/H (30MPH)	KPa/PSI	500/73	525/76	550/80	575/83	600/87	625/91	650/94	675/98	700/102	
	KG/LBS	8500/18700	8750/19300	9000/19800	9250/20400	9750/21500	10000/22000	10300/22700	10600/23400	10900**/24000**	

Size	Pattern	Star Rating	Ind Code	Rim Width & Flange	Min. Dual Spacing		Approximate Inflated Dimensions				Loaded Dimensions		Tread Depth		Performance Capability (TKPH)				Tube		
					in	mm	in	mm	in	mm	in	mm	in	mm	T1	T2A	T2	T3	T1	T2	
21.00R33	TBS265	★★	E-4	15.00/3.0	27.6	701	22.5	572	78.8	2001	36.3	922	65.5	52.0	190		230	295			TL

Rigid Dump Truck

50KM/H (30MPH)	KPa/PSI	500/73	525/76	550/80	575/83	600/87	625/91	650/94	675/98	700/102	
	KG/LBS	10900/24000	11200/24700	11500/25400	11800/26000	12500/27600	12850/28300	13200/29100	13600/30000	14000**/30000**	

Size	Pattern	Star Rating	Ind Code	Rim Width & Flange	Min. Dual Spacing		Approximate Inflated Dimensions				Loaded Dimensions		Tread Depth		Performance Capability (TKPH)				Tube		
					in	mm	in	mm	in	mm	in	mm	in	mm	T1	T2A	T2	T3	T1	T2	
35.45R33	TL3355-	★ ★★ ★★★	L-5	28.00/3.5			35.0	889	83.8	2077			119.7	95.0							TL

Loader and Bulldozer

10KM/H (5MPH)	KPa/PSI	450/65	475/69	500/73	525/76	550/80	575/83	600/87	625/91	650/94	800/116
	KG/LBS	21200/46700	22400/49400	23000*/50700*	23600/52000	25000/55100	25750/56800	26500/58400	27250/60000	28000**/61500**	32500***/71500***

Size	Pattern	Star Rating	Ind Code	Rim Width & Flange	Min. Dual Spacing		Approximate Inflated Dimensions				Loaded Dimensions		Tread Depth		Performance Capability (TKPH)				Tube		
					in	mm	in	mm	in	mm	in	mm	in	mm	T1	T2A	T2	T3	T1	T2	
35.45R33	TL5785	★★★★ ★★★★★	L-4 E-4	28.00/3.5			35.1	892	79.3	2013			76.8	61.0							TL

Underground

10KM/H (5MPH)	KPa/PSI	800/116									
	KG/LBS	32500**/71500**									

Underground

40KM/H (25MPH)	KPa/PSI	800/116									
	KG/LBS	29000***/63000***									

35"

Size	Pattern	Star Rating	Ind Code	Rim Width & Flange	Min. Dual Spacing		Approximate Inflated Dimensions				Loaded Dimensions		Tread Depth		Performance Capability (TKPH)					Tube	
							Overall Width		Overall Diameter		Static Load Radius				T1	T2A	T2	T3			
					in	mm	in	mm	in	mm	in	mm	in	mm	in	mm	T1	T2A	T2	T3	T1
21.00R35	T85265	★★	E-4	15.00/3.8	27.6	704	22.5	572	80.8	2052	36.8	934	75.6	60.0	195	220	250	299		TL	

Rigid Dump Truck

50KM/H (30MPH)	KPa/PSI	500/73	525/76	550/80	575/83	600/87	625/91	650/94	675/98	700/102	
	KG/LBS	11200/24700	11500/25400	11800/26000	12500/27600	12850/28300	13200/29100	13600/30000	14000/30900	14500**/32000**	

Size	Pattern	Star Rating	Ind Code	Rim Width & Flange	Min. Dual Spacing		Approximate Inflated Dimensions				Loaded Dimensions		Tread Depth		Performance Capability (TKPH)					Tube	
							Overall Width		Overall Diameter		Static Load Radius				T1	T2A	T2	T2C	T3		
					in	mm	in	mm	in	mm	in	mm	in	mm	in	mm	in	mm	T1	T2A	T2
24.00R35	T85265	★★	E-4	17.00/3.5	31.3	795	25.7	653	85.6	2175	38.5	977	81.9	65.0	234	234	265	300	325		TL

Rigid Dump Truck

10KM/H (5MPH)	KPa/PSI	500/73	525/76	550/80	575/83	600/87	625/91	650/94	675/98	700/102	
	KG/LBS	14000/30900	14500/32000	15500/34200	16000/35300	16500/36400	17000/37500	17500/38600	18000/39700	18500**/40800**	18500**/40800**

Size	Pattern	Star Rating	Ind Code	Rim Width & Flange	Min. Dual Spacing		Approximate Inflated Dimensions				Loaded Dimensions		Tread Depth		Performance Capability (TKPH)					Tube	
							Overall Width		Overall Diameter		Static Load Radius				T1	T2A	T2	T2C	T3		
					in	mm	in	mm	in	mm	in	mm	in	mm	in	mm	in	mm	T1	T2A	T2
24.00R35	T8577A	★★★	E-4	17.00/3.5	31.3	795	25.7	653	85.6	2175	38.4	976	75.8	57.0	319	351	407	423	478		TL

Rigid Dump Truck

10KM/H (5MPH)	KPa/PSI	500/73	525/76	550/80	575/83	600/87	625/91	650/94	675/98	700/102	800/116
	KG/LBS	14000/30900	14500/32000	15500/34200	16000/35300	16500/36400	17000/37500	17500/38600	18000/39700	18500**/40800**	20000**/44300**

Size	Pattern	Star Rating	Ind Code	Rim Width & Flange	Min. Dual Spacing		Approximate Inflated Dimensions				Loaded Dimensions		Tread Depth		Performance Capability (TKPH)					Tube		
							Overall Width		Overall Diameter		Static Load Radius				T1	T2A	T2	T2C	T3			
					in	mm	in	mm	in	mm	in	mm	in	mm	in	mm	in	mm	T1	T2A	T2	T2C
24.00R35	T8577A Sump	★★★	E-4	17.00/3.5	31.3	795	25.7	653	85.6	2175			88.2	70.0								TL

Rigid Dump Truck

10KM/H (5MPH)	KPa/PSI	500/73	525/76	550/80	575/83	600/87	625/91	650/94	675/98	700/102	800/116
	KG/LBS	14000/30900	14500/32000	15500/34200	16000/35300	16500/36400	17000/37500	17500/38600	18000/39700	18500**/40800**	20000**/44300**

49"

Size	Pattern	Star Rating	Ind Code	Rim Width & Flange	Min. Dual Spacing		Approximate Inflated Dimensions				Loaded Dimensions		Tread Depth		Performance Capability (TKPH)						Tube	
					in	mm	in	mm	in	mm	in	mm	32nds	mm	T1	T2A	T2B	T2C	T2D	T3	T1	T1L
27.00R49	T852B5	★★	E-4	19.50/4.0	35.1	892	28.0	737	106.4	2702	48.4	1230.2	93.2	74.0	386	397	422	505	561	680	TL	

Rigid Dump Truck

50KM/H (30MPH)	KPa/PSI	500/73	525/76	550/80	575/83	600/87	625/91	650/94	675/98	700/102	
	KG/LBS	20600/45400	21800/48100	22400/49400	23000/50700	23600/52000	25000/55100	25750/56800	26500/58400	27250**/60000**	

Size	Pattern	Star Rating	Ind Code	Rim Width & Flange	Min. Dual Spacing		Approximate Inflated Dimensions				Loaded Dimensions		Tread Depth		Performance Capability (TKPH)						Tube	
					in	mm	in	mm	in	mm	in	mm	32nds	mm	T1	T2A	T2B	T2C	T2D	T3	T1	T1L
27.00R49	T859A	★★	E-4	19.50/4.0	35.1	892	29.0	737	106.4	2702	48.4	1230.2	93.2	74.0	410	421	448	536	596	722	TL	

Rigid Dump Truck

50KM/H (30MPH)	KPa/PSI	500/73	525/76	550/80	575/83	600/87	625/91	650/94	675/98	700/102	
	KG/LBS	20600/45400	21800/48100	22400/49400	23000/50700	23600/52000	25000/55100	25750/56800	26500/58400	27250**/60000**	

51"

Size	Pattern	Star Rating	Ind Code	Rim Width & Flange	Min. Dual Spacing		Approximate Inflated Dimensions				Loaded Dimensions		Tread Depth		Performance Capability (TKPH)						Tube	
							Overall Width		Overall Diameter		Static Load Radius				T1	T2A	T2B	T2C	T2D	T3		
					in	mm	in	mm	in	mm	in	mm	in	mm	32nds	mm						
3L00G1	7859A	★★	E-4	24.00/5.0	42.3	1074	35.2	894	120.5	3061	54.3	1379.9	104.6	83.0	456	469	499	597	663	804		TL

Rigid Dump Truck

50KM/H (31MPH)	KPa/PSI	500/73	525/76	550/80	575/83	600/87	625/91	650/94	675/98	700/102	
	KG/LBS	30000/66000	30750/68000	32500/71500	33500/74000	34500/76000	35500/78500	36500/80500	37500/82500	38750**/85500**	

Size	Pattern	Star Rating	Ind Code	Rim Width & Flange	Min. Dual Spacing		Approximate Inflated Dimensions				Loaded Dimensions		Tread Depth		Performance Capability (TKPH)						Tube	
							Overall Width		Overall Diameter		Static Load Radius				T1	T2A	T2B	T2C	T2D	T3		
					in	mm	in	mm	in	mm	in	mm	in	mm	32nds	mm						
3L00G1	7L586	★★	E-4	24.00/5.0	42.3	1074	35.2	894	120.5	3061	54.3	1379.9	104.6	83.0	427	439	467	559	621	752		TL

Rigid Dump Truck

50KM/H (31MPH)	KPa/PSI	500/73	525/76	550/80	575/83	600/87	625/91	650/94	675/98	700/102	
	KG/LBS	30000/66000	30750/68000	32500/71500	33500/74000	34500/76000	35500/78500	36500/80500	37500/82500	38750**/85500**	

57"

Size	Pattern	Star Rating	Ind Code	Rim Width & Flange	Min. Dual Spacing		Approximate Inflated Dimensions				Loaded Dimensions		Tread Depth		Performance Capability (TKPH)						Tube	
							Overall Width		Overall Diameter		Static Load Radius				T1	T2A	T2B	T2C	T2D	T3		
					in	mm	in	mm	in	mm	in	mm	in	mm	32nds	mm						
3L00G7	78599	★★	E-4	27.00/6.0 29.00/6.0	47.0	1217	40.0	1016	135.4	3438	62.0	1575.2	124.7	99.0	550	594	633	713	766	880		TL

Rigid Dump Truck

50KM/H (31MPH)	KPa/PSI	500/73	525/76	550/80	575/83	600/87	625/91	650/94	675/98	700/102	
	KG/LBS	40000/88000	41250/91000	43750/96500	45000/99000	46250/102000	47500/104500	48750/107500	50000/110000	51500**/113500**	

Size	Pattern	Star Rating	Ind Code	Rim Width & Flange	Min. Dual Spacing		Approximate Inflated Dimensions				Loaded Dimensions		Tread Depth		Performance Capability (TKPH)						Tube	
							Overall Width		Overall Diameter		Static Load Radius				T1	T2A	T2B	T2C	T2D	T3		
					in	mm	in	mm	in	mm	in	mm	in	mm	32nds	mm						
40.00G7	78599	★★	E-4	29.00/6.0 32.00/6.0	51.6	1311	43.2	1097	141.5	3594	62.4	1585.9	124.7	99.0	635	666	730	806	873	1016		TL

Rigid Dump Truck

50KM/H (31MPH)	KPa/PSI	500/73	525/76	550/80	575/83	600/87	625/91	650/94	675/98	700/102	
	KG/LBS	46250/102000	48750/107500	50000/110000	51500/113500	53000/117000	54500/120000	56000/123500	58000/128000	60000**/132500**	

Size	Pattern	Star Rating	Ind Code	Rim Width & Flange	Min. Dual Spacing	Approximate Inflated Dimensions				Loaded Dimensions		Tread Depth		Performance Capability (TKPH)						Tube													
						Overall Width		Overall Diameter		Static Load Radius		2300µ	2000µ	T1	T2A	T2B	T2C	T2D	T3	TT	TL												
						in	mm	in	mm	in	mm																						
40.00R57	T809A980	★★	E-4	29.00/6.0 12.00/6.0	51.6	1311	43.2	1097	141.5	3594			122.2	97.0																			TL

Rigid Dump Truck

50KM/H (30MPH)	KPa/PSI	500/73	525/76	550/80	575/83	600/87	625/91	650/94	675/98	700/102	
	KG/LBS	46250/102000	48750/107500	50000/110000	51500/113500	53000/117000	54500/120000	56000/123500	58000/128000	60000/132500**	

Size	Pattern	Star Rating	Ind Code	Rim Width & Flange	Min. Dual Spacing	Approximate Inflated Dimensions				Loaded Dimensions		Tread Depth		Performance Capability (TKPH)						Tube														
						Overall Width		Overall Diameter		Static Load Radius		2300µ	2000µ	T1	T2A	T2B	T2C	T2D	T3	TT	TL													
						in	mm	in	mm	in	mm																							
46.00R57	T8599	★★	E-4	29.00/6.0 12.00/6.0	55.1	1400	46.0	1168	141.5	3594	62.1	1576.9	124.7	99.0	724	782	833	920	996	1158														TL

Rigid Dump Truck

50KM/H (30MPH)	KPa/PSI	550/80	575/83	600/87	625/91	650/94	675/98	700/102	
	KG/LBS	51000/117000	54500/120000	56000/123500	58000/128000	60000/132500	61500/135500	63000/139000**	

Size	Pattern	Star Rating	Ind Code	Rim Width & Flange	Min. Dual Spacing	Approximate Inflated Dimensions				Loaded Dimensions		Tread Depth		Performance Capability (TKPH)						Tube													
						Overall Width		Overall Diameter		Static Load Radius		2300µ	2000µ	T1	T2A	T2B	T2C	T2D	T3	TT	TL												
						in	mm	in	mm	in	mm																						
46.00R57	T8599A	★★	E-4	29.00/6.0 12.00/6.0	55.1	1400	46.0	1168	141.5	3594	62.1	1576.9	124.7	99.0	750	810	863	953	1032	1200													TL

Rigid Dump Truck

50KM/H (30MPH)	KPa/PSI	550/80	575/83	600/87	625/91	650/94	675/98	700/102	
	KG/LBS	51000/117000	54500/120000	56000/123500	58000/128000	60000/132500	61500/135500	63000/139000**	

Size	Pattern	Star Rating	Ind Code	Rim Width & Flange	Min. Dual Spacing	Approximate Inflated Dimensions				Loaded Dimensions		Tread Depth		Performance Capability (TKPH)						Tube														
						Overall Width		Overall Diameter		Static Load Radius		2300µ	2000µ	T1	T2A	T2B	T2C	T2D	T3	TT	TL													
						in	mm	in	mm	in	mm																							
50.00R57	T8599A	★★	E-4	32.00/6.0 12.00/6.0	56.1	1426	46.0	1220	142.3	3615	62.6	1593.3	115.9	92.0	776	830	890	975	1050	1250														TL

Rigid Dump Truck

50KM/H (30MPH)	KPa/PSI	500/73	550/80	600/87	650/94	700/102	750/109	800/116	
	KG/LBS	55000/121000	59000/130000	61000/136000	67000/147500	69000/152000**	71000/156500	73000/161000	

63"

Size	Pattern	Star Rating	Ind Code	Rim Width & Flange	Min. Dual Spacing	Approximate Inflated Dimensions				Loaded Dimensions		Tread Depth		Performance Capability (TKPH)						Tube														
						Overall Width		Overall Diameter		Static Load Radius		2300µ	2000µ	T1	T2A	T2B	T2C	T2D	T3	TT	TL													
						in	mm	in	mm	in	mm																							
55.00R63	T8599A	★★	E-4	36.00/5.0 38.00/5.0	64.4	1637	51	1346	148.8	3780	85	1650.6	124.7	99	817	882	910	1037	1120	1307														TL

Rigid Dump Truck

100KM/H (60MPH)	KPa/PSI	450/65	475/68	500/73	525/76	550/80	575/83	600/87	
	KG/LBS	47000/147500	69000/152000	71000/156500	75000/165500	77500/171000	80000/176500	82500/182000**	

Triangle BIAS Tire

20"

Size	Pattern	Ply Rating	Ind Code	Rim Width & Flange	Min. Dual Spacing	Approximate Inflated Dimensions				Loaded Dimensions		Tread Depth		Tube	
						Overall Width		Overall Diameter		Static Load Radius		32nds	mm	TT	TL
						in	mm	in	mm	in	mm				
11.00-20	C-1	16PR	C-1	8.0		11.8	290	42.5	1080			25.2	16.0	TT	

Compactor

10KM/H (5MPH)	KPa/PSI	725/105	
	KG/LBS	5450(16PR)/12000(16PR)	

Size	Pattern	Ply Rating	Ind Code	Rim Width & Flange	Min. Dual Spacing	Approximate Inflated Dimensions				Loaded Dimensions		Tread Depth		Tube	
						Overall Width		Overall Diameter		Static Load Radius		32nds	mm	TT	TL
						in	mm	in	mm	in	mm				
13.00-20	C-1	16PR	C-1	8.5		12.6	320	41.7	1060			28.2	16.0	TT	

Compactor

10KM/H (5MPH)	KPa/PSI	800/116	
	KG/LBS	5450(16PR)/12000(16PR)	

Size	Pattern	Ply Rating	Ind Code	Rim Width & Flange	Min. Dual Spacing	Approximate Inflated Dimensions				Loaded Dimensions		Tread Depth		Tube	
						Overall Width		Overall Diameter		Static Load Radius		32nds	mm	TT	TL
						in	mm	in	mm	in	mm				
16/70-20	TL472	10PR 12PR 14PR	L-1	13.5DC		16	410	42.3	1075			31.5	25.0	TT	

Loader and Bulldozer

10KM/H (5MPH)	KPa/PSI	325/47	375/54	450/65	
	KG/LBS	4250(10PR)/9370(10PR)	4625(12PR)/10200(12PR)	5150(14PR)/11350(14PR)	

Size	Pattern	Ply Rating	Ind Code	Rim Width & Flange	Min. Dual Spacing	Approximate Inflated Dimensions				Loaded Dimensions		Tread Depth		Tube	
						Overall Width		Overall Diameter		Static Load Radius		32nds	mm	TT	TL
						in	mm	in	mm	in	mm				
16/70-20	TL516	12PR	L-1	13.5DC		16	410	42.3	1075			29.0	23.0	TT	

Loader and Bulldozer

10KM/H (5MPH)	KPa/PSI	300/44	
	KG/LBS	3355(12PR)/7380(12PR)	

Size	Pattern	Ply Rating	Ind Code	Rim Width & Flange	Min. Dual Spacing	Approximate Inflated Dimensions				Loaded Dimensions		Tread Depth		Tube	
						Overall Width		Overall Diameter		Static Load Radius		32nds	mm	TT	TL
						in	mm	in	mm	in	mm				
18-20	TR118	14PR	E-7	14.00T		17.9	455	42.9	1090			20.8	16.5	TL	

Desert

50KM/H (30MPH)	KPa/PSI	360/52	
	KG/LBS	4625(14PR)/10200(14PR)	

21"

Size	Pattern	Ply Rating	Ind Code	Rim Width & Flange	Min. Dual Spacing	Approximate Inflated Dimensions				Loaded Dimensions		Tread Depth		Tube	
						Overall Width		Overall Diameter		Static Load Radius		12h6	mm	TT	TL
						in	mm	in	mm	in	mm				
24-21	T8812	14PR	E-7	18.0/1.5		24.0	618	53.9	1370			22.7	18.0	TT	

Desert

50KM/H (30MPH)	KPa/PSI	70/10	100/15	140/20	
	KG/LBS	2600/5730	3300/7270	3875/8590/5550/12490	

Size	Pattern	Ply Rating	Ind Code	Rim Width & Flange	Min. Dual Spacing	Approximate Inflated Dimensions				Loaded Dimensions		Tread Depth		Tube	
						Overall Width		Overall Diameter		Static Load Radius		12h6	mm	TT	TL
						in	mm	in	mm	in	mm				
24-21	TR139	14PR	E-7	18.0/1.5		24	610	53.9	1370			22.7	18.0	TL	

Desert

50KM/H (30MPH)	KPa/PSI	240/35			
	KG/LBS	5400/11990/11900/26490			

Size	Pattern	Ply Rating	Ind Code	Rim Width & Flange	Min. Dual Spacing	Approximate Inflated Dimensions				Loaded Dimensions		Tread Depth		Tube	
						Overall Width		Overall Diameter		Static Load Radius		12h6	mm	TT	TL
						in	mm	in	mm	in	mm				
27.25-21	TR139	14PR	E-7	19.50/1.5		27.0	685	58.4	1510			20.2	16.0	TL	

Desert

50KM/H (30MPH)	KPa/PSI	70/10	100/15	140/20	178/25
	KG/LBS	3380/7460	4285/9450	5070/11180	6800/16PR/12800/16PR

24"

Size	Pattern	Ply Rating	Ind Code	Rim Width & Flange	Min. Dual Spacing		Approximate Inflated Dimensions				Loaded Dimensions		Tread Depth		Tube	
							Overall Width		Overall Diameter		Static Load Radius		32nds	mm	TT	TL
							in	mm	in	mm	in	mm				
1200-24	L-45	20PR 24PR	L-45	8.5	15.4	391	12.4	315	50.2	1275			42.2	33.5	TT	

Underground Mining

10KM/H (5MPH)	KPa/PSI	675/98	700/102	725/105	750/109	775/112	800/116	825/120	975/141
	KG/LBS	5900/13000	6050/13300	6200/13600	6350/13900	6500/14300	6700/14800	6900/15200	7000/15500

Size	Pattern	Ply Rating	Ind Code	Rim Width & Flange	Min. Dual Spacing		Approximate Inflated Dimensions				Loaded Dimensions		Tread Depth		Tube	
							Overall Width		Overall Diameter		Static Load Radius		32nds	mm	TT	TL
							in	mm	in	mm	in	mm				
1200-24	L-55	24PR	L-55	8.5	15.4	391	12.4	315	50.2	1275			49.3	55.0	TT	

Underground Mining

10KM/H (5MPH)	KPa/PSI	675/98	700/102	725/105	750/109	775/112	800/116	825/120	975/141
	KG/LBS	5900/13000	6050/13300	6200/13600	6350/13900	6500/14300	6700/14800	6900/15200	7000/15500

Size	Pattern	Ply Rating	Ind Code	Rim Width & Flange	Min. Dual Spacing		Approximate Inflated Dimensions				Loaded Dimensions		Tread Depth		Tube	
							Overall Width		Overall Diameter		Static Load Radius		32nds	mm	TT	TL
							in	mm	in	mm	in	mm				
1200-24	RD-55	24PR	RD-55	8.5	15.4	391	12.4	315	50.2	1275			49.3	55.0	TT	

Industrial and Port

50KM/H (30MPH)	KPa/PSI	825/120	975/141													
	KG/LBS	6900/15200	7500/16500	7500/16500	8100/17800											

Size	Pattern	Ply Rating	Ind Code	Rim Width & Flange	Min. Dual Spacing		Approximate Inflated Dimensions				Loaded Dimensions		Tread Depth		Tube	
							Overall Width		Overall Diameter		Static Load Radius		32nds	mm	TT	TL
							in	mm	in	mm	in	mm				
1400-24IG	TL508	12PR	E-2	8.00IG			14.2	360	53.1	1350			31.5	25.0	TL	

Grader

40KM/H (25MPH)	KPa/PSI	125/18	150/22	175/25	200/29	225/33	250/36	275/40	
	KG/LBS	2060/4540	2300/5080	2500/5520	2650/5840	2800/6150	3075/6800	3275/7280	

Size	Pattern	Ply Rating	Ind Code	Rim Width & Flange	Min. Dual Spacing		Approximate Inflated Dimensions				Loaded Dimensions		Tread Depth		Tube	
							Overall Width		Overall Diameter		Static Load Radius		32nds	mm	TT	TL
							in	mm	in	mm	in	mm				
1400-24	TL558	20PR 30PR	E-3	10.00	17.7	450	14.8	375	53.9	1370			37.8	30.0	TT	

Rigid Dump Truck

50KM/H (30MPH)	KPa/PSI	600/87	625/91	650/94	650/94	650/94			
	KG/LBS	5350/11800	5350/11800	6000/13200	6000/13200	6000/13200			

Industrial and Port

10KM/H (5MPH)	KPa/PSI	925/134														
	KG/LBS	10000/23000														

Size	Pattern	Ply Rating	Ind Code	Rim Width & Flange	Min. Dual Spacing		Approximate Inflated Dimensions				Loaded Dimensions		Tread Depth		Tube	
							Overall Width		Overall Diameter		Static Load Radius		32nds	mm	TT	TL
							in	mm	in	mm	in	mm	in	mm		

14.00-24	TL612	16PR 24PR	E-3	10.00(A/SDC)	17.7	450	14.8	375	53.9	1370			37.8	30.0	TT
----------	-------	--------------	-----	--------------	------	-----	------	-----	------	------	--	--	------	------	----

Load Rating Equivalent

10KM/H (5MPH)	KPa/PSI	475/69	500/73	525/76	550/80	
	KG/LBS	6700/14800	6900/15200	7100/15700	7300/16100/16900	

Rigid Dump Truck

50KM/H (30MPH)	KPa/PSI	450/65	475/69	500/73	525/76	550/80	575/83
	KG/LBS	4500/9900	4625/10200	4750/10500	4875/10700	5000/11000	5250/11600/12400/13100

Size	Pattern	Ply Rating	Ind Code	Rim Width & Flange	Min. Dual Spacing		Approximate Inflated Dimensions				Loaded Dimensions		Tread Depth		Tube	
							Overall Width		Overall Diameter		Static Load Radius		32nds	mm	TT	TL
							in	mm	in	mm	in	mm	in	mm		

14.00-24	TL619	28PR	IND-4				14.8	375	55.9	1420			58.0	46.0	TT
----------	-------	------	-------	--	--	--	------	-----	------	------	--	--	------	------	----

Industrial and Port

25KM/H (15MPH)	KPa/PSI	1000/145	
	KG/LBS	12500(28PR)/27500(28PR)	

25"

Size	Pattern	Ply Rating	Ind Code	Rim Width & Flange	Min. Dual Spacing		Approximate Inflated Dimensions				Loaded Dimensions		Tread Depth		Tube	
							Overall Width		Overall Diameter		Static Load Radius		32nds	mm	TT	TL
							in	mm	in	mm	in	mm	in	mm		

13.00-25	TL558	28PR 32PR	E-3	8.5/1.3	16.7	425	13.2	335	51.2	1300			30.8	24.5	TT
----------	-------	--------------	-----	---------	------	-----	------	-----	------	------	--	--	------	------	----

Rigid Dump Truck

50KM/H (30MPH)	KPa/PSI	700/100	800/116	900/130	
	KG/LBS	4875(28PR)/10750(28PR)	5300(32PR)/11600(32PR)	5600(36PR)/12300(36PR)	

Size	Pattern	Ply Rating	Ind Code	Rim Width & Flange	Min. Dual Spacing		Approximate Inflated Dimensions				Loaded Dimensions		Tread Depth		Tube	
							Overall Width		Overall Diameter		Static Load Radius		32nds	mm	TT	TL
							in	mm	in	mm	in	mm	in	mm		

14.00-25	TL558	36PR	E-3	10.00/2.0	17.7	450	14.8	375	53.9	1370			31.5	25.0	TT
----------	-------	------	-----	-----------	------	-----	------	-----	------	------	--	--	------	------	----

Rigid Dump Truck

50KM/H (30MPH)	KPa/PSI	850/123	
	KG/LBS	6500(36PR)/14100(36PR)	

Size	Pattern	Ply Rating	Ind Code	Rim Width & Flange	Min. Dual Spacing		Approximate Inflated Dimensions				Loaded Dimensions		Tread Depth		Tube	
							Overall Width		Overall Diameter		Static Load Radius		32nds	mm	TT	TL
							in	mm	in	mm	in	mm	in	mm		

14.00-25	TL566	36PR	E-3	10.00/2.0	17.7	450	14.8	375	53.9	1370			31.5	25.0	TT
----------	-------	------	-----	-----------	------	-----	------	-----	------	------	--	--	------	------	----

Rigid Dump Truck

50KM/H (30MPH)	KPa/PSI	850/123	
	KG/LBS	6500(36PR)/14100(36PR)	

Size	Pattern	Ply Rating	Ind Code	Rim Width & Flange	Min. Dual Spacing		Approximate Inflated Dimensions				Loaded Dimensions		Tread Depth		Tube	
							Overall Width		Overall Diameter		Static Load Radius		32nds	mm	TT	TL
							in	mm	in	mm	in	mm				
15.5-25	TL502	12PR	L-1	12.00/1.3			15.5	395	50.2	1275			31.5	25.0	TL	

Loader and Bulldozer

10KM/H (5MPH)	KPa/PSI	275/40	300/44	325/46	350/51	375/54	400/58		
	KG/LBS	4500/9900	4750/10500	4875/10700	5150/11400	5300/11700	5600/12390/12390(12PR)		

Size	Pattern	Ply Rating	Ind Code	Rim Width & Flange	Min. Dual Spacing		Approximate Inflated Dimensions				Loaded Dimensions		Tread Depth		Tube	
							Overall Width		Overall Diameter		Static Load Radius		32nds	mm	TT	TL
							in	mm	in	mm	in	mm				
15.5-25	TL508	12PR	E-2	12.00/1.3			15.5	395	50.2	1275			31.5	25.0	TL	

Grader

40KM/H (25MPH)	KPa/PSI	125/18	150/22	175/25	200/29	225/33	250/36		
	KG/LBS	1800/3960	1950/4300	2180/4800	2360/5200	2500/5520	2650(12PR)/5840(12PR)		

Size	Pattern	Ply Rating	Ind Code	Rim Width & Flange	Min. Dual Spacing		Approximate Inflated Dimensions				Loaded Dimensions		Tread Depth		Tube	
							Overall Width		Overall Diameter		Static Load Radius		32nds	mm	TT	TL
							in	mm	in	mm	in	mm				
16.00-25	TL612	12PR 12PR 12PR	E-3	11.25/2.0	20.2	51.3	16.9	430	58.9	1495			37.8	30.0	TT TL TL	

Rigid Dump Truck

30KM/H (18MPH)	KPa/PSI	475/60	500/73	525/76	550/80	575/83	650/83		
	KG/LBS	6000/13200	6300/13900	6500/14300	6500/14300	6700(2PR)/14800(2PR)	7300(2PR)/16100(2PR)		

Size	Pattern	Ply Rating	Ind Code	Rim Width & Flange	Min. Dual Spacing		Approximate Inflated Dimensions				Loaded Dimensions		Tread Depth		Tube	
							Overall Width		Overall Diameter		Static Load Radius		32nds	mm	TT	TL
							in	mm	in	mm	in	mm				
17.5-25	TL612	12PR 12PR 12PR	L-3	14.00/1.5			17.5	445	53.1	1350			32.8	26.0	TT	

Loader and Bulldozer

10KM/H (5MPH)	KPa/PSI	275/40	300/44	325/47	350/51	375/54	400/58	425/62	450/65	475/68
	KG/LBS	5300/11700	5600/12300	5800/12800	6100(2PR)/13800(2PR)	6300/13900	6700/14800	6900/15200	7100/15700	7300(4PR)/16100(4PR)

Grader

40KM/H (25MPH)	KPa/PSI	125/18	150/22	175/25	200/29	225/33	250/36		275/40
	KG/LBS	2120/4680	2360/5200	2575/5680	2800(2PR)/6180(2PR)	3000/6600	3130/6950		3300(4PR)/7400(4PR)

Size	Pattern	Ply Rating	Ind Code	Rim Width & Flange	Min. Dual Spacing		Approximate Inflated Dimensions				Loaded Dimensions		Tread Depth		Tube	
							Overall Width		Overall Diameter		Static Load Radius		32nds	mm	TT	TL
							in	mm	in	mm	in	mm	in	mm		

17.5-25	TL612	12PR 16PR	L-3	14.00/1.5			17.5	445	53.1	1350			32.1	25.5	TL
---------	-------	--------------	-----	-----------	--	--	------	-----	------	------	--	--	------	------	----

Loader and Bulldozer

10KM/H (5MPH)	KPa/PSI	275/40	300/44	325/47	350/51	375/54	400/58	425/62	450/65	475/69
	KG/LBS	5300/11700	5600/12300	5800/12800	6150/13700	6300/13900	6700/14800	6900/15200	7100/15700	7300/16100

Grader

40KM/H (25MPH)	KPa/PSI	125/18	150/22	175/25	200/29	225/33	250/36	275/40		
	KG/LBS	2120/4680	2360/5200	2575/5680	2800/6200	3000/6600	3150/6950	3350/7400	3500/7700	

Size	Pattern	Ply Rating	Ind Code	Rim Width & Flange	Min. Dual Spacing		Approximate Inflated Dimensions				Loaded Dimensions		Tread Depth		Tube	
							Overall Width		Overall Diameter		Static Load Radius		32nds	mm	TT	TL
							in	mm	in	mm	in	mm	in	mm		

17.5-25	TL516	12PR 16PR	L-3	14.00/1.5			17.5	445	53.1	1350			32.8	26.0	TT
---------	-------	--------------	-----	-----------	--	--	------	-----	------	------	--	--	------	------	----

Loader and Bulldozer

10KM/H (5MPH)	KPa/PSI	275/40	300/44	325/47	350/51	375/54	400/58	425/62	450/65	475/69
	KG/LBS	5300/11700	5600/12300	5800/12800	6150/13700	6300/13900	6700/14800	6900/15200	7100/15700	7300/16100

Size	Pattern	Ply Rating	Ind Code	Rim Width & Flange	Min. Dual Spacing		Approximate Inflated Dimensions				Loaded Dimensions		Tread Depth		Tube	
							Overall Width		Overall Diameter		Static Load Radius		32nds	mm	TT	TL
							in	mm	in	mm	in	mm	in	mm		

17.5-25	TL568	16PR	L-4	14.00/1.5			17.5	445	55.1	1400			58.0	46.0	TL
---------	-------	------	-----	-----------	--	--	------	-----	------	------	--	--	------	------	----

Loader and Bulldozer

10KM/H (5MPH)	KPa/PSI	375/54	400/58	425/62	450/65	475/69				
	KG/LBS	6300/13900	6700/14800	6900/15200	7100/15700	7300/16100				

Grader

40KM/H (25MPH)	KPa/PSI	225/33	250/36	275/40						
	KG/LBS	3000/6600	3150/6950	3350/7400						

Size	Pattern	Ply Rating	Ind Code	Rim Width & Flange	Min. Dual Spacing		Approximate Inflated Dimensions				Loaded Dimensions		Tread Depth		Tube	
							Overall Width		Overall Diameter		Static Load Radius		32nds	mm	TT	TL
							in	mm	in	mm	in	mm	in	mm		

17.5-25	TL508	12PR	E-2	14.00/1.5			17.5	445	53.1	1350			31.5	25.0	TT
		14PR													TL
		16PR													
		18PR													

Grader

40KM/H (25MPH)	KPa/PSI	125/18	150/22	175/25	200/29	225/33	250/36	275/40		
	KG/LBS	2120/4680	2360/5200	2575/5680	2800/6200	3000/6600	3150/6950	3350/7400	3500/7700	

Size	Pattern	Ply Rating	Ind Code	Rim Width & Flange	Min. Dual Spacing		Approximate Inflated Dimensions				Loaded Dimensions		Tread Depth		Tube	
							Overall Width		Overall Diameter		Static Load Radius		32nds	mm	TT	TL
							in	mm	in	mm	in	mm				
17.5-25	L-55	24PR	L-55	14.00/1.5			17.5	445	55.1	1400			58.0	46.0		TL

Underground Mining

10KM/H (5MPH)	KPa/PSI	450/65	475/69	500/73	525/76	550/80	575/83	600/87	700/102
	KG/LBS	7100/15700	7300/16100	7500/16500	7750/17100	8000/17600	8250/18200	8500/18700	9200/20400/20400/20400

Size	Pattern	Ply Rating	Ind Code	Rim Width & Flange	Min. Dual Spacing		Approximate Inflated Dimensions				Loaded Dimensions		Tread Depth		Tube	
							Overall Width		Overall Diameter		Static Load Radius		32nds	mm	TT	TL
							in	mm	in	mm	in	mm				
18.00-25	TL612	24PR	E-3	11.00/2.5	23.1	547	19.7	500	63.6	1615			40.3	52.0	TT	
		26PR													TL	
		28PR													TL	
		30PR													TL	
		32PR													TL	

Rigid Dump Truck

50KM/H (30MPH)	KPa/PSI	450/65	475/69	500/73	525/76	550/80	575/83	600/87	
	KG/LBS	7500/16500	7750/17100	8000/17600	8250/18200	8500/18700	8750/19300/19300/19300	9000/19800	
50KM/H (30MPH)	KPa/PSI	625/91	650/94	675/98	700/102				
	KG/LBS	9250/20400	9250/20400	9500/20900	9750/21500/21500/21500				

Size	Pattern	Ply Rating	Ind Code	Rim Width & Flange	Min. Dual Spacing		Approximate Inflated Dimensions				Loaded Dimensions		Tread Depth		Tube	
							Overall Width		Overall Diameter		Static Load Radius		32nds	mm	TT	TL
							in	mm	in	mm	in	mm				
18.00-25	L-55	40PR	L-55	11.00/2.5			19.7	500	65.9	1675			98.9	78.5		TL

Underground

10KM/H (5MPH)	KPa/PSI	950/138														
	KG/LBS	17000/40PR/37480/40PR														

Size	Pattern	Ply Rating	Ind Code	Rim Width & Flange	Min. Dual Spacing		Approximate Inflated Dimensions				Loaded Dimensions		Tread Depth		Tube	
							Overall Width		Overall Diameter		Static Load Radius		32nds	mm	TT	TL
							in	mm	in	mm	in	mm				
18.00-25	TL510	40PR 44PR	E-4/NE-4	11.00/2.5	23.1	547	19.7	500	65.9	1675			68.0	64.0	TT/TL	TL

Industrial and Port

18KM/H (5MPH)	KPa/PSI	1000/145														
	KG/LBS	22950/40PR/50490/40PR														
25KM/H (15MPH)	KPa/PSI	1000/145														
	KG/LBS	21250/40PR/46750/40PR														

Rigid Dump Truck

50KM/H (30MPH)	KPa/PSI	600/87	625/91	650/94	675/98	700/102	775/112		
	KG/LBS	9000/19800	9250/20400	9250/20400	9500/20900	9750/21500/21500/21500	10300/44PR/22700/44PR		

Size	Pattern	Ply Rating	Ind Code	Rim Width & Flange	Min. Dual Spacing		Approximate Inflated Dimensions				Loaded Dimensions		Tread Depth		Tube	
							Overall Width		Overall Diameter		Static Load Radius		12nds	mm	TT	TL
					in	mm	in	mm	in	mm	in	mm				
18.00-25	TL530	4PR	IND-4	13.00/2.5	23.1	587	19.7	500	65.9	367.5			68.0	54.0	TL	

Industrial and Port

10KM/H (5MPH)	KPa/PSI	1000/145		
	KG/LBS	22950(40PR)/50430(40PR)		
25KM/H (15MPH)	KPa/PSI	1000/145		
	KG/LBS	21250(40PR)/46750(40PR)		

Size	Pattern	Ply Rating	Ind Code	Rim Width & Flange	Min. Dual Spacing		Approximate Inflated Dimensions				Loaded Dimensions		Tread Depth		Tube	
							Overall Width		Overall Diameter		Static Load Radius		12nds	mm	TT	TL
					in	mm	in	mm	in	mm	in	mm				
18.00-25	TL619	4PR	IND-5	13.00/2.5	23.1	587	19.7	500	65.9	367.5			66.9	59.0	TL	

Industrial and Port

10KM/H (5MPH)	KPa/PSI	1000/145		
	KG/LBS	22950(40PR)/50430(40PR)		
25KM/H (15MPH)	KPa/PSI	1000/145		
	KG/LBS	21250(40PR)/46750(40PR)		

Size	Pattern	Ply Rating	Ind Code	Rim Width & Flange	Min. Dual Spacing		Approximate Inflated Dimensions				Loaded Dimensions		Tread Depth		Tube	
							Overall Width		Overall Diameter		Static Load Radius		12nds	mm	TT	TL
					in	mm	in	mm	in	mm	in	mm				
26.5-25	TL612	10PR 20PR 22PR	L-3	17.00/2.0			26.5	520	58.7	1490			35.4	28.5	TL	

Loader and Bulldozer

10KM/H (5MPH)	KPa/PSI	275/40	300/44	325/47	350/51	375/54	400/58	425/62	450/65
	KG/LBS	7100/15700	7500/16500	7750/17100	8200(8PR)/8200(8PR)	8500/18700	8750/19300	9250/20400	9500(20PR)/2000(20PR)

Industrial and Port

10KM/H (5MPH)	KPa/PSI	475/60	500/73	525/76	625/91	
	KG/LBS	9750/21500	10000/22000	10300/22700	11900(28PR)/2540(28PR)	
25KM/H (15MPH)	KPa/PSI	625/91				
	KG/LBS	9750(28PR)/21500(28PR)				

Size	Pattern	Ply Rating	Ind Code	Rim Width & Flange	Min. Dual Spacing		Approximate Inflated Dimensions				Loaded Dimensions		Tread Depth		Tube	
							Overall Width		Overall Diameter		Static Load Radius		12nds	mm	TT	TL
					in	mm	in	mm	in	mm	in	mm				
26.5-25	TL612	10PR 20PR	17.00/2.0	8.0			26.5	520	58.7	1490			36.5	29.0	TT	

Loader and Bulldozer

10KM/H (5MPH)	KPa/PSI	275/40	300/44	325/47	350/51	375/54	400/58	425/62	450/65
	KG/LBS	7100/15700	7500/16500	7750/17100	8200(8PR)/8200(8PR)	8500/18700	8750/19300	9250/20400	9500(20PR)/2000(20PR)

Size	Pattern	Ply Rating	Ind Code	Rim Width & Flange	Min. Dual Spacing		Approximate Inflated Dimensions				Loaded Dimensions		Tread Depth		Tube	
							Overall Width		Overall Diameter		Static Load Radius		33nds	mm	TT	TL
							in	mm	in	mm	in	mm				
20.5-25	TL508	12PR 16PR	E-2	17.00/2.0			20.5	520	58.7	1490			35.9	28.5		TL

Grader

48KM/H (29MPH)	KPa/PSI	125/18	150/22	175/25	200/29	225/33										
	KG/LBS	3800/150	3150/950	850/1290/1390/1390	3750/8250	4000/9000/8800/9000										

Size	Pattern	Ply Rating	Ind Code	Rim Width & Flange	Min. Dual Spacing		Approximate Inflated Dimensions				Loaded Dimensions		Tread Depth		Tube	
							Overall Width		Overall Diameter		Static Load Radius		33nds	mm	TT	TL
							in	mm	in	mm	in	mm				
20.5-25	TL520	20PR	L-5	17.00/2.0			20.5	520	61.0	1550			38.3	28.0		TT

Loader and Bulldozer

18KM/H (11MPH)	KPa/PSI	375/54	400/58	425/62	200/29	450/65										
	KG/LBS	8500/18700	8750/19300	9250/20400	3750/8250	9500/20900/20900/20900										

Size	Pattern	Ply Rating	Ind Code	Rim Width & Flange	Min. Dual Spacing		Approximate Inflated Dimensions				Loaded Dimensions		Tread Depth		Tube	
							Overall Width		Overall Diameter		Static Load Radius		33nds	mm	TT	TL
							in	mm	in	mm	in	mm				
21.00-25	TR119	16PR	E-7	15.00/3.0			22.5	570	66.3	1685			17.6	14.0		TL

Desert

18KM/H (11MPH)	KPa/PSI	245/35														
	KG/LBS	10000/16PR/22000/16PR														
45KM/H (28MPH)	KPa/PSI	245/35														
	KG/LBS	5800/16PR/12800/16PR														

Size	Pattern	Ply Rating	Ind Code	Rim Width & Flange	Min. Dual Spacing		Approximate Inflated Dimensions				Loaded Dimensions		Tread Depth		Tube	
							Overall Width		Overall Diameter		Static Load Radius		33nds	mm	TT	TL
							in	mm	in	mm	in	mm				
23.5-25	TL612	16PR 20PR	L-3	19.50/2.5			23.5	595	63.0	1615			39.7	31.3		TL

Loader and Bulldozer

18KM/H (11MPH)	KPa/PSI	275/40	300/44	375/54												
	KG/LBS	9000/19800	9500/19PR/20900/19PR	10800/23900/24000/23900												

Size	Pattern	Ply Rating	Ind Code	Rim Width & Flange	Min. Dual Spacing		Approximate Inflated Dimensions				Loaded Dimensions		Tread Depth		Tube	
							Overall Width		Overall Diameter		Static Load Radius		33nds	mm	TT	TL
							in	mm	in	mm	in	mm				
23.5-25	TL612	16PR	L-3	19.50/2.5			23.5	595	63.0	1615			40.3	32.0		TT
		18PR														
		20PR														
		24PR														

Loader and Bulldozer

18KM/H (11MPH)	KPa/PSI	275/40	300/44	325/47	350/51	375/54	400/58	425/62	450/65	475/69						
	KG/LBS	9000/19800	9200/19PR/20800/19PR	10000/22000	10500/23PR/22100/23PR	10800/23900/24000/23900	11200/24700	11800/26000	12150/26800	12500/28PR/27000/28PR						

Size	Pattern	Ply Rating	Ind Code	Rim Width & Flange	Min. Dual Spacing	Approximate Inflated Dimensions				Loaded Dimensions		Tread Depth		Tube	
						Overall Width		Overall Diameter		Static Load Radius		32nds	mm	TT	TL
						in	mm	in	mm	in	mm				
23.5-25	TL566	16PR 18PR	L-3	19.50/2.5		23.5	595	63.6	1615			38.4	30.5	TT	

Loader and Bulldozer

10KM/H (5MPH)	KPa/PSI	275/40	300/44	325/47	350/51	
	KG/LBS	9000/19800	9500/20900	10000/22000	10050/22110	10050/22110

Size	Pattern	Ply Rating	Ind Code	Rim Width & Flange	Min. Dual Spacing	Approximate Inflated Dimensions				Loaded Dimensions		Tread Depth		Tube	
						Overall Width		Overall Diameter		Static Load Radius		32nds	mm	TT	TL
						in	mm	in	mm	in	mm				
23.5-25	TL658	18PR	L-3	19.50/2.5		23.5	595	63.6	1611			40.3	32.0	TT	

Loader and Bulldozer

10KM/H (5MPH)	KPa/PSI	350/51			
	KG/LBS	10050/22110	10050/22110		

Size	Pattern	Ply Rating	Ind Code	Rim Width & Flange	Min. Dual Spacing	Approximate Inflated Dimensions				Loaded Dimensions		Tread Depth		Tube	
						Overall Width		Overall Diameter		Static Load Radius		32nds	mm	TT	TL
						in	mm	in	mm	in	mm				
23.5-25	TL516	16PR 18PR 20PR	L-3	19.50/2.5		23.5	595	63.6	1615			40.3	32.0	TT	

Loader and Bulldozer

10KM/H (5MPH)	KPa/PSI	275/40	300/44	350/51	375/54	
	KG/LBS	9000/19800	8500/18700	10050/22110	10900/24000	10900/24000

Size	Pattern	Ply Rating	Ind Code	Rim Width & Flange	Min. Dual Spacing	Approximate Inflated Dimensions				Loaded Dimensions		Tread Depth		Tube	
						Overall Width		Overall Diameter		Static Load Radius		32nds	mm	TT	TL
						in	mm	in	mm	in	mm				
23.5-25	TL508	16PR	S-2	19.50/2.5		23.5	595	63.6	1615			38.4	30.5	TT TL	

Grader

40KM/H (25MPH)	KPa/PSI	175/25	200/29		
	KG/LBS	4375/9650	4750/10500		

Size	Pattern	Ply Rating	Ind Code	Rim Width & Flange	Min. Dual Spacing	Approximate Inflated Dimensions				Loaded Dimensions		Tread Depth		Tube	
						Overall Width		Overall Diameter		Static Load Radius		32nds	mm	TT	TL
						in	mm	in	mm	in	mm				
23.5-25	TL520	20PR	L-5	19.50/2.5		23.5	595	65.9	1675			50.7	45.0	TT	

Loader and Bulldozer

10KM/H (5MPH)	KPa/PSI	375/54			
	KG/LBS	10900/24000	10900/24000		

Size	Pattern	Ply Rating	Ind Code	Rim Width & Flange	Min. Dual Spacing	Approximate Inflated Dimensions				Loaded Dimensions		Tread Depth		Tube	
						Overall Width		Overall Diameter		Static Load Radius		32nds	mm	TT	TL
						in	mm	in	mm	in	mm				
26.5-25	TL612	20PR 28PR	L-4	22.00/3.0		26.5	675	70.9	1800			66.0	54.0		TL

Loader and Bulldozer

10KM/H (5MPH)	KPa/PSI	275/40	300/44	325/47	350/51	375/54	400/58	425/62	450/65	475/69
	KG/LBS	11500/25400	12150/26800	12900/27600	13200/2910/2910/2910	13600/30000	14000/30900	14500/32000	15000/33100	15500/3400/3400/28PR

Size	Pattern	Ply Rating	Ind Code	Rim Width & Flange	Min. Dual Spacing	Approximate Inflated Dimensions				Loaded Dimensions		Tread Depth		Tube	
						Overall Width		Overall Diameter		Static Load Radius		32nds	mm	TT	TL
						in	mm	in	mm	in	mm				
26.5-25	TL612	20PR	L-3	22.00/3.0		26.5	675	68.9	1750			44.1	35.0		TT/TL
		24PR													TL
		28PR													TT/TL
		32PR													R

Loader and Bulldozer

10KM/H (5MPH)	KPa/PSI	275/40	300/44	325/47	350/51	375/54	400/58	425/62	450/65
	KG/LBS	11500/25400	12150/26800	12900/27600	13200/2910/2910/2910	13600/30000	14000/30900/30900/28PR	14500/32000	15000/31100
10KM/H (5MPH)	KPa/PSI	475/69	500/73	525/76	550/80				
	KG/LBS	11500/25400/34200/28PR	16000/35300	16500/36400	17000/37500/17500/32PR				

Industrial and Fleet

10KM/H (5MPH)	KPa/PSI	550/80							
	KG/LBS	17000/32900/17500/32PR							
25KM/H (15MPH)	KPa/PSI	550/80							
	KG/LBS	14500/32900/12000/32PR							

Size	Pattern	Ply Rating	Ind Code	Rim Width & Flange	Min. Dual Spacing	Approximate Inflated Dimensions				Loaded Dimensions		Tread Depth		Tube	
						Overall Width		Overall Diameter		Static Load Radius		32nds	mm	TT	TL
						in	mm	in	mm	in	mm				
26.5-25	L-55	36PR	L-55	22.00/3.0		26.5	675	70.9	1800			109.0	87.0		TL

Underground Mining

10KM/H (5MPH)	KPa/PSI	500/73	525/76	550/80	575/83	600/87	625/91		
	KG/LBS	16000/35300	16500/36400	17000/37500	17500/38600	18000/39700	18500/40800/40800/36PR		

Size	Pattern	Ply Rating	Ind Code	Rim Width & Flange	Min. Dual Spacing		Approximate Inflated Dimensions				Loaded Dimensions		Tread Depth		Tube	
							Overall Width		Overall Diameter		Static Load Radius		22nds	mm	T7	T8
							in	mm	in	mm	in	mm	in	mm		
29.5-25	TL612	2-2PR 2-2PR 3-PR	L-5	25.00/3.5			29.5	750	738	1875			54.2	85.0		TL

Lawney and Ballroom

10KM/H (5MPH)	KPa/PSI	275/40	300/44	325/47	350/51	375/54	400/58	425/62	450/76
	KG/LBS	13600/30000	14500/32000	15000/32900	16000/35300	16600/36400	17000/37500	17500/38600	20000/44000

Industrial and Port

10KM/H (5MPH)	KPa/PSI	525/76							
	KG/LBS	20000/44000							
25KM/H (15MPH)	KPa/PSI	525/76							
	KG/LBS	17000/37500							

Size	Pattern	Ply Rating	Ind Code	Rim Width & Flange	Min. Dual Spacing		Approximate Inflated Dimensions				Loaded Dimensions		Tread Depth		Tube	
							Overall Width		Overall Diameter		Static Load Radius		22nds	mm	T7	T8
							in	mm	in	mm	in	mm	in	mm		
29.5-25	TR138	2-PR	E-7	25.00/3.5			29.5	750	718	1830			27.1	21.5		TL

Desert

50KM/H (30MPH)	KPa/PSI	240/35							
	KG/LBS	9350/20900							

Size	Pattern	Ply Rating	Ind Code	Rim Width & Flange	Min. Dual Spacing		Approximate Inflated Dimensions				Loaded Dimensions		Tread Depth		Tube	
							Overall Width		Overall Diameter		Static Load Radius		22nds	mm	T7	T8
							in	mm	in	mm	in	mm	in	mm		
66+44.00-25	TR128	2-2PR 2-2PR	E-7	36.00H			44.0	1114	67.0	1702			12.6	10.0		TL

Desert

10KM/H (5MPH)	KPa/PSI	345/50							
	KG/LBS	10000/22000							
50KM/H (30MPH)	KPa/PSI	345/50							
	KG/LBS	7000/15200							

Size	Pattern	Ply Rating	Ind Code	Rim Width & Flange	Min. Dual Spacing		Approximate Inflated Dimensions				Loaded Dimensions		Tread Depth		Tube	
							Overall Width		Overall Diameter		Static Load Radius		22nds	mm	T7	T8
							in	mm	in	mm	in	mm	in	mm		
66+43.00-25	TL526	2-2PR 2-2PR 2-2PR	HR-1	36.00H			43.5	1054	67.0	1702			70.6	56.0		TL

Desert

50KM/H (30MPH)	KPa/PSI	345/50	360/51	415/60					
	KG/LBS	6700/14600	7000/15400	7300/16100					
10KM/H (5MPH)	KPa/PSI	415/60							
	KG/LBS	8000/17600							

26"

Size	Pattern	Ply Rating	Ind Code	Rim Width & Flange	Min. Dual Spacing		Approximate Inflated Dimensions				Loaded Dimensions		Tread Depth		Tube	
							Overall Width		Overall Diameter		Static Load Radius		32nds	mm	TT	TL
							in	mm	in	mm	in	mm				
23.1-26	T8822	8PR 12PR 14PR	E-7	18.6/1.5			23.0	595	59.1	1090			13.9	150	TT	

Compactor

10KM/H (5MPH)	KPa/PSI	140/20	200/29	230/33	
	KG/LBS	4000(9PR)/5000(9PR)	5150(12PR)/11400(12PR)	5600(14PR)/12300(14PR)	

Size	Pattern	Ply Rating	Ind Code	Rim Width & Flange	Min. Dual Spacing		Approximate Inflated Dimensions				Loaded Dimensions		Tread Depth		Tube	
							Overall Width		Overall Diameter		Static Load Radius		32nds	mm	TT	TL
							in	mm	in	mm	in	mm				
23.1-26	R3	12PR 14PR	R-1	DW20A			23.1	587	62.2	1081			15.1	280	TL	

Compactor

40KM/H (25MPH)	KPa/PSI	170/25	180/26	190/28	
	KG/LBS	3250(12PR)/7150(12PR)	3450(14PR)	3550(14PR)/7850(14PR)	

Size	Pattern	Ply Rating	Ind Code	Rim Width & Flange	Min. Dual Spacing		Approximate Inflated Dimensions				Loaded Dimensions		Tread Depth		Tube	
							Overall Width		Overall Diameter		Static Load Radius		32nds	mm	TT	TL
							in	mm	in	mm	in	mm				
23.1-26	TL526	14PR	R-1	DW20A			23.1	587	63.2	1005			13.0	420	TL	

Compactor

40KM/H (25MPH)	KPa/PSI	170/25	180/26	190/28	
	KG/LBS	3250/7150	3450/7600	3550(14PR)/7850(14PR)	

29"

Size	Pattern	Ply Rating	Ind Code	Rim Width & Flange	Min. Dual Spacing		Approximate Inflated Dimensions				Loaded Dimensions		Tread Depth		Tube	
							Overall Width		Overall Diameter		Static Load Radius					
							in	mm	in	mm	in	mm	in	mm	TT	TL
29.5-29	TL612	2PR	L-5	25.00/3.5			29.5	750	27.8	19.75			54.2	43.0	TL	

Loaders and Bulldozers

100KM/H (SMPH)	KPa/PSI	275/40	300/44	325/47	350/51	375/54	
	KG/LBS	34500/52000	35500/54200	36000/55300	37000/57500	37500/58600	

45"

Size	Pattern	Ply Rating	Ind Code	Rim Width & Flange	Min. Dual Spacing		Approximate Inflated Dimensions				Loaded Dimensions		Tread Depth		Tube	
							Overall Width		Overall Diameter		Static Load Radius					
							in	mm	in	mm	in	mm	in	mm	TT	TL
45.05-45	TL120	5PR	L-5	36.00/4.5			44.9	1140	107.7	27.95			146.1	116.0	TL	

Loaders and Bulldozers

120KM/H (SMPH)	KPa/PSI	350/50	375/53	400/57	425/61	450/64	475/68
	KG/LBS	45000/69000	46250/70200	47500/70450	48750/70700	48750/70700	50000/70900